



basic education

Department:
Basic Education
REPUBLIC OF SOUTH AFRICA

**NATIONAL
SENIOR CERTIFICATE**

GRADE 12

ENGLISH HOME LANGUAGE P3

FEBRUARY/MARCH 2017

MARKS: 100

TIME: 2½ hours

This question paper consists of 6 pages.

INSTRUCTIONS AND INFORMATION

1. This question paper consists of TWO sections:

SECTION A: Essay (50)
SECTION B: Transactional Texts (2 x 25) (50)
2. Answer ONE question in SECTION A and TWO questions in SECTION B.
3. Write in the language in which you are being assessed.
4. Start EACH section on a NEW page.
5. You must plan (e.g. using a mind map/diagram/flow chart/key words), edit and proofread your work. The plan must appear BEFORE the answer.
6. All planning must be clearly indicated as such. It is advisable to draw a line through all planning.
7. You are strongly advised to spend your time as follows:

SECTION A: approximately 80 minutes
SECTION B: approximately 70 (2 x 35) minutes
8. Number the answers correctly according to the numbering system used in this question paper.
9. The title/heading must NOT be included when doing a word count.
10. Write neatly and legibly.

SECTION A: ESSAY**QUESTION 1**

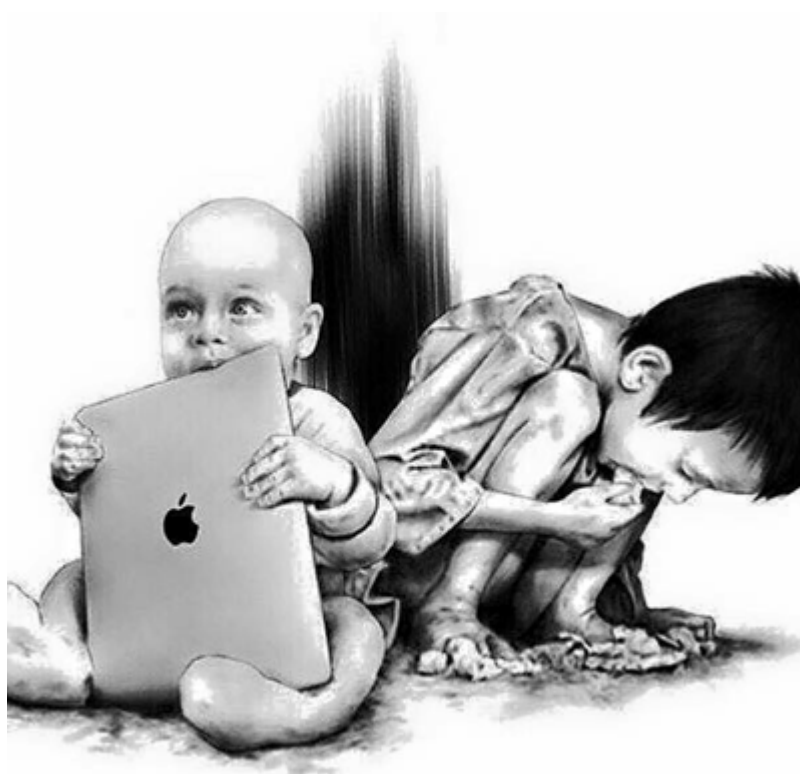
Write an essay of 400–450 words (2–2½ pages) on ONE of the following topics. Write down the NUMBER and TITLE/HEADING of your essay.

- 1.1 'Only from the heart can you touch the sky.'
(Rumi) [50]
- 1.2 The silence of my narrative [50]
- 1.3 Messages in the streets [50]
- 1.4 A bridge too far ... [50]
- 1.5 'The worst sin towards our fellow creatures is not to hate them, but to be indifferent to them: that is the essence of inhumanity.'
(George Bernard Shaw) [50]
- 1.6 The pictures reproduced below and on the next page may evoke a reaction or feeling in you or stir your imagination.

Select ONE picture and write an essay in response. Write the question number (1.6.1, 1.6.2 or 1.6.3) of your choice and give your essay a title.

NOTE: There must be a clear link between your essay and the picture you have chosen.

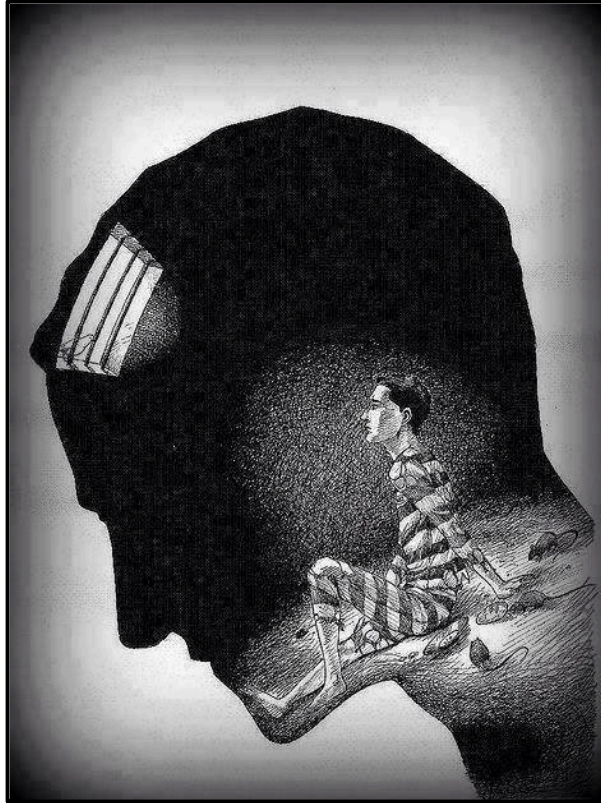
1.6.1



[Source: www.genius.com]

[50]

1.6.2



[Source: www.genius.com]

[50]

1.6.3



[Source: <http://4.bp.blogspot.com>]

[50]

TOTAL SECTION A: 50

SECTION B: TRANSACTIONAL TEXTS**QUESTION 2**

- Respond to TWO of the following topics.
- The body of each of your answers should be 180–200 words (20–25 lines) in length.
- Pay careful attention to the following:
 - Audience, register, tone and style
 - Choice of words and language structure
 - Format
- Write down the NUMBER and TITLE/HEADING of the text you have chosen, e.g. 2.1 Speech.

2.1 SPEECH

The World Health Organisation claims that there is a significant increase in diabetes, heart disease and obesity among young people. One of the major causes of these diseases is living an inactive lifestyle. This is a matter of concern to your community.

As a health and lifestyle coach in your community, you have been invited to present a speech on the importance of participation in sport/physical activity and how an active lifestyle could combat diseases. Write the speech.

You may use the image below as inspiration.



[Source: www.antalya-outdoor.com]

[25]

2.2 FORMAL REPORT

You are a youth member of the Social Welfare Committee of the local municipality. The mayor has requested you to investigate unemployment levels in your community.

Write a formal report in which you record your findings and make recommendations.

[25]**2.3 OBITUARY**

There have been a number of protests in your area. A close friend of yours lost his/her life during one of these uprisings.

Write an obituary honouring him/her.

[25]**2.4 NEWSPAPER ARTICLE**

Write a newspaper article with the headline:

QUALITY EDUCATION DOES NOT HAVE A PRICE TAG!

[25]**2.5 INTERVIEW**

You have been crowned Miss/Mr Earth South Africa for your active participation in various conservation campaigns. In dialogue form, write the interview that takes place between you and a reporter from a leading conservation magazine.

[25]**2.6 LETTER TO THE PRESS**

A competition that promotes innovative ideas was advertised in a national newspaper. However, this competition has not met your expectations. Write a letter to the press in which you express your dissatisfaction about the event and suggest how it could be improved.

[25]

TOTAL SECTION B: 50
GRAND TOTAL: 100