



education

Department:
Education
REPUBLIC OF SOUTH AFRICA

**NATIONAL
SENIOR CERTIFICATE**

IGREYIDI 12

ISINDEBELE ILIMI LESIBILI LOKUNGEZELELA (SAL)

IPHEPHA LESIBILI (P2)

NOVEMBA 2008

IMITLOMELO: 80

ISIKHATHI: ama-iri ama-2

Iphepheli linamakhasi ali-7.

YELELA:

1. Iphepheli lineengaba ezintathu: ISIGABA A, B no-C.

ISIGABA A: Amatheksti wokuzitlamela.

ISIGABA B: Amatheksti amade wokuthintana.

ISIGABA C: Amatheksti amafitjhani wokuthintana, amithombo, anikela ilwazi, abukelwako kanye naweendlela ezahlukeneko zokuthintana.

2. Phendula imibuzo engaphasi kweengaba ezintathu.

3. Khetha imibuzo ukuya ngemiyalo onikelwe yona.

ISIGABA A: AMATHEKSTI WOKUZITLAMELA**UMBUZO 1**

Khetha isihloko ESISODWA utlole indaba engaba namagama ali-150 ukuya kali-180.

Umfundi kufanele atjengise umtamo wakhe wokuthoma lapho atlathlabeje khona nalapho alungise khona iimphoso ngombana uzokwabelwa imitlomelo elitjhumi, bese kuthi eminye imitlomelo ayibuthelele ngomsebenzi ophелеleko.

1.1 Ilanga elakukhambela kumbi khulu. [40]

NOFANA

1.2 Ihlelo engilithanda khulu kumabonakude/emrhatjhwani. [40]

NOFANA

1.3 Tlola indaba uveze bona kungenziwani ukubuyisa isimilo esilahlekele itja. [40]

NOFANA

1.4 'Ngangithoma ukuvuma etjhatjhalazini phakathi kwabantu abanengi kangaka'.
Tlola indaba uhlathulule isehlakalweso. [40]

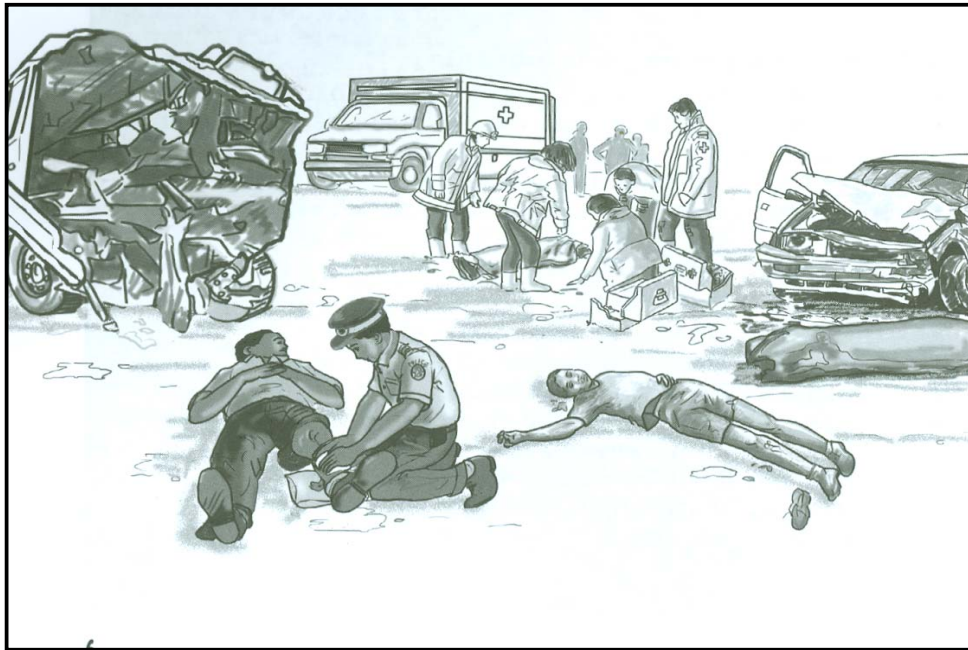
NOFANA

1.5 Qalisisa isithombe esilandelako utlole ngaso indaba bewuyinikele nesihloko. [40]



NOFANA

- 1.6 Tlola indaba esuselwe esehlakalweni esingenzasi ngesihloko esithi, 'Ungaseli bewutjhayele'.



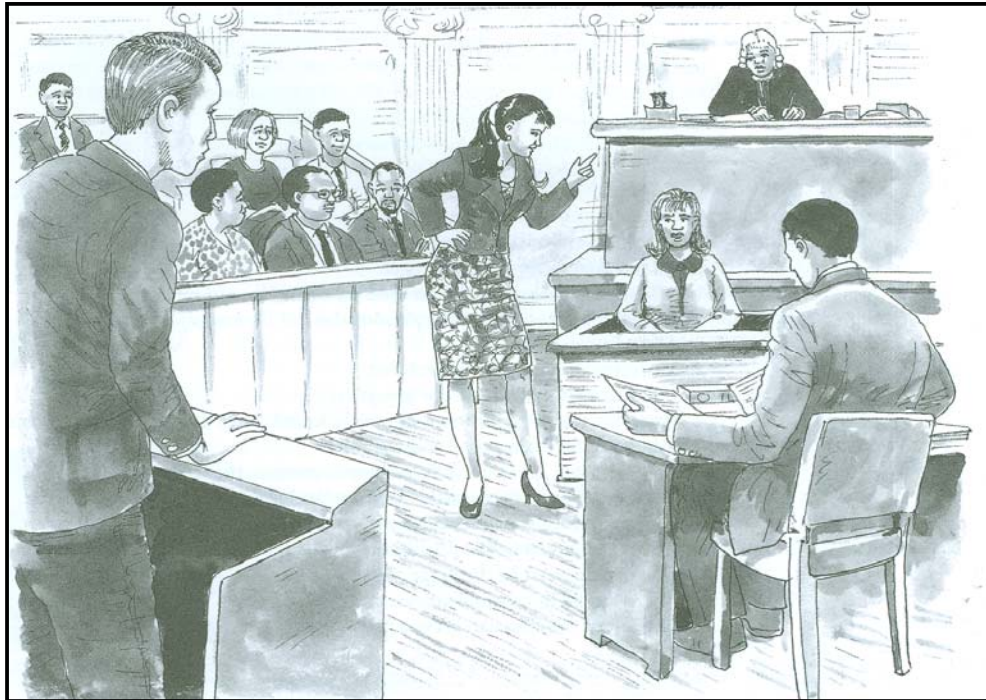
[40]

IMITLOMELO YESIGABA A: 40

ISIGABA B: AMATHEKSTI AMADE WOKUTHINTANA**UMBUZO 2**

Khetha isihloko ESISODWA bese utlola ngaso. Umtlolwakho ube namagama ama-60 ukuya kama-80.

- 2.1 Qalisisa isithombe esilandelako bese utlola ikulumo-pendulwano esuselwe kiso.

**[20]**

- 2.2 Tlola incwadi yokuthokoza ozoyithumela kusovikili othengele isiqhema senu sakamakhakhulararhwe ijinifomu.

[20]**NOFANA**

- 2.3 Bewujamele abafundi besikolo senu embizweni yabafundi ebeyibanjelwe epalamende. Tlola umbiko omfitjhani ozowethulela abafundi.

[20]**NOFANA**

- 2.4 Tlolela umnganakho incwadi yokumlayelisa njengombana aya ngaphetjheya nje.

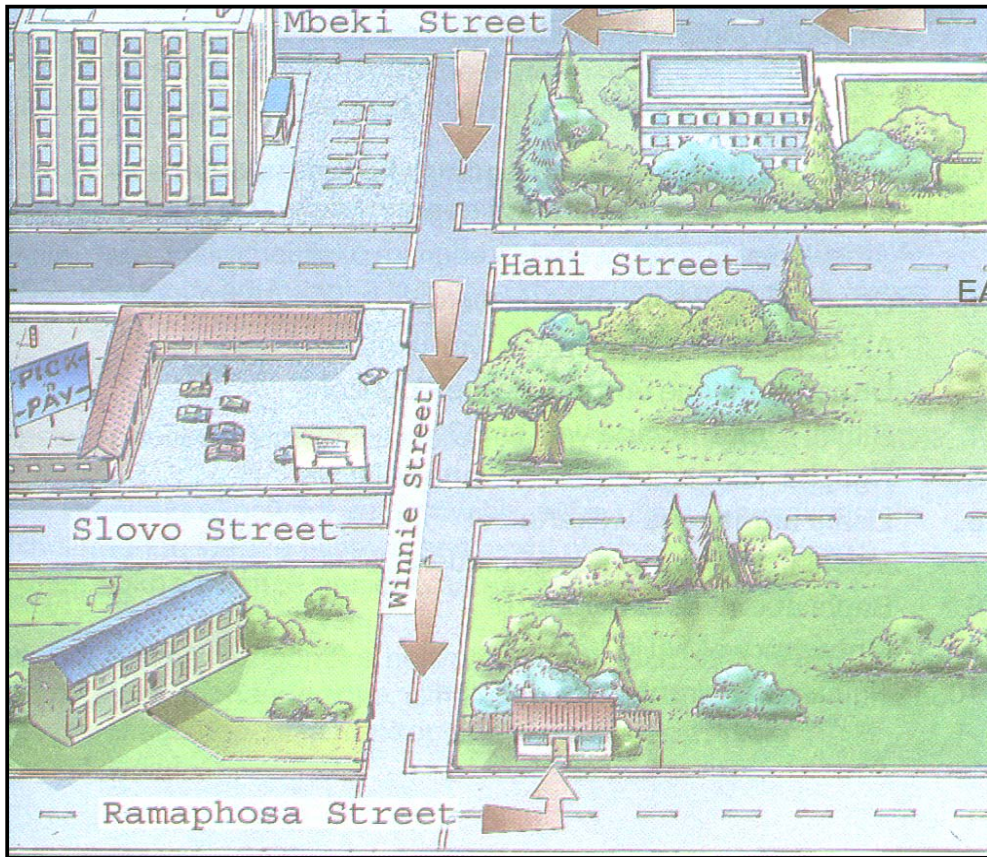
[20]**IMITLOMELO YESIGABA B: 20**

ISIGABA C: AMATHEKSTI AMAFITJHANI WOKUTHINTANA, AMITHOMBO, ANIKELA ILWAZI, ABUKELWAKO KANYE NAWEENDLELA EZAHLUKAHLUKENEKO ZOKUTHINTANA

UMBUZO 3

Khetha isiqetjhana ESISODWA bese utlola ngaso. Umtlolwakho ube namagama ama-40 ukuya kama-60.

3.1 Qalisisa isithombe esilandelako bese usebenzisa amatshwayo owabonako ukutlolela umnganakho iinkomba azazilandela nakeza kwenu.

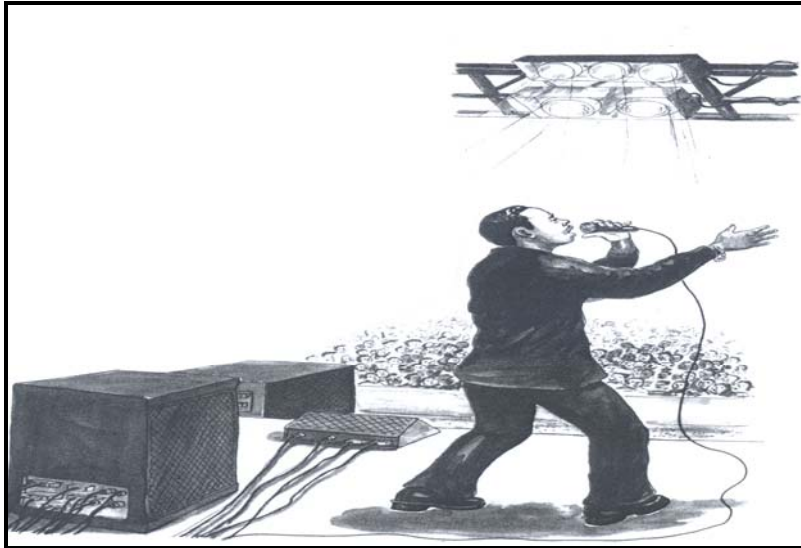


[20]

NOFANA

- 3.2 'Nakhu okuzabe kwenzeka ngeLanga leliZweloke lokuyelelisa ngeNtumbantonga'.

Tlola isikhangiso esisuselwe esihlokweni nesithombeni esingenzasi.



[20]

NOFANA

- 3.3 Tlola iposkarada ozolithumela emrhathjweni othileko ubawe ukudlalalelwa iingoma ozithandako.

[20]

NOFANA

- 3.4 Tlola iflaya wazise umphakathi ngejima lokuhlwengisa indawo yangekhenu.



[20]

IMITLOMELO YESIGABA C: 20

INANI LOKE: 80