



basic education

Department:
Basic Education
REPUBLIC OF SOUTH AFRICA

**NATIONAL
SENIOR CERTIFICATE**

GRADE 12

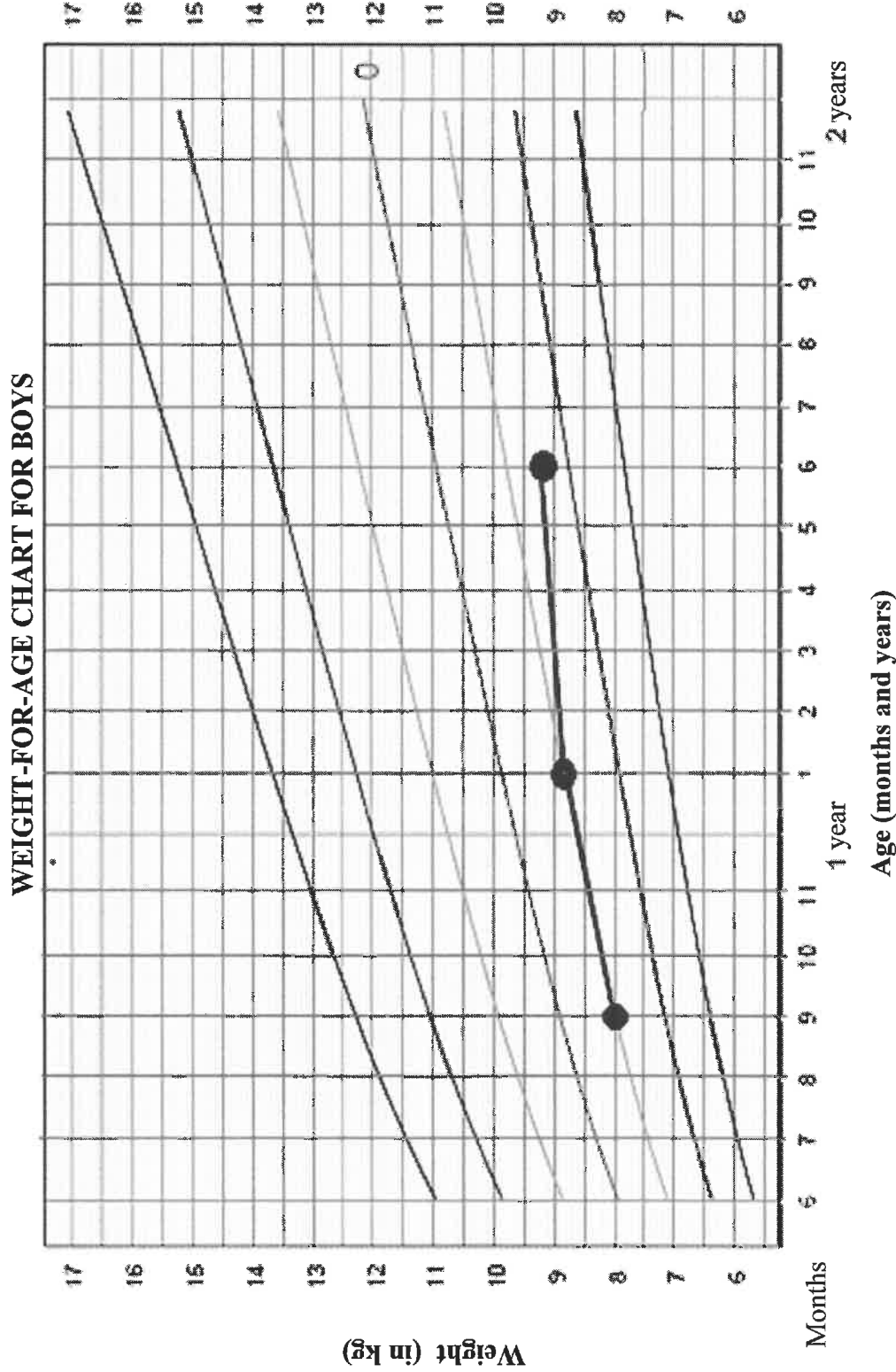
MATHEMATICAL LITERACY P1

ADDENDUM

FEBRUARY/MARCH 2018

This addendum consists of 4 pages with 3 annexures.

ANNEXURE A
QUESTION 3.1



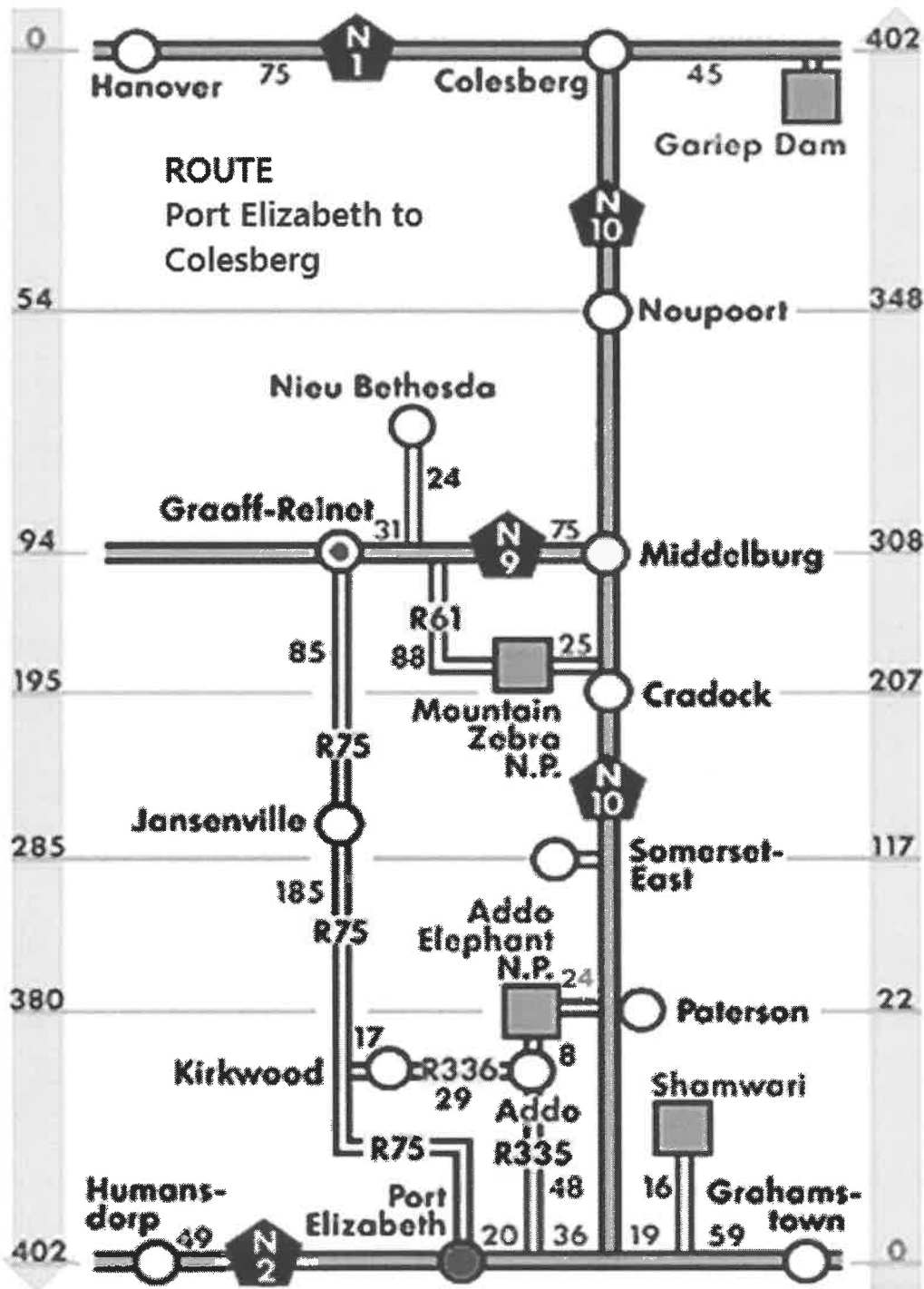
NOTE: The dots on the solid black line shows the three visits.

[Source: World Health Organisation (WHO)]

ANNEXURE B

QUESTION 4.1

STRIP CHART OF THE ROUTE FROM COLESBURG TO PORT ELIZABETH (DISTANCES IN KILOMETRES)



[Source: www.google.com]

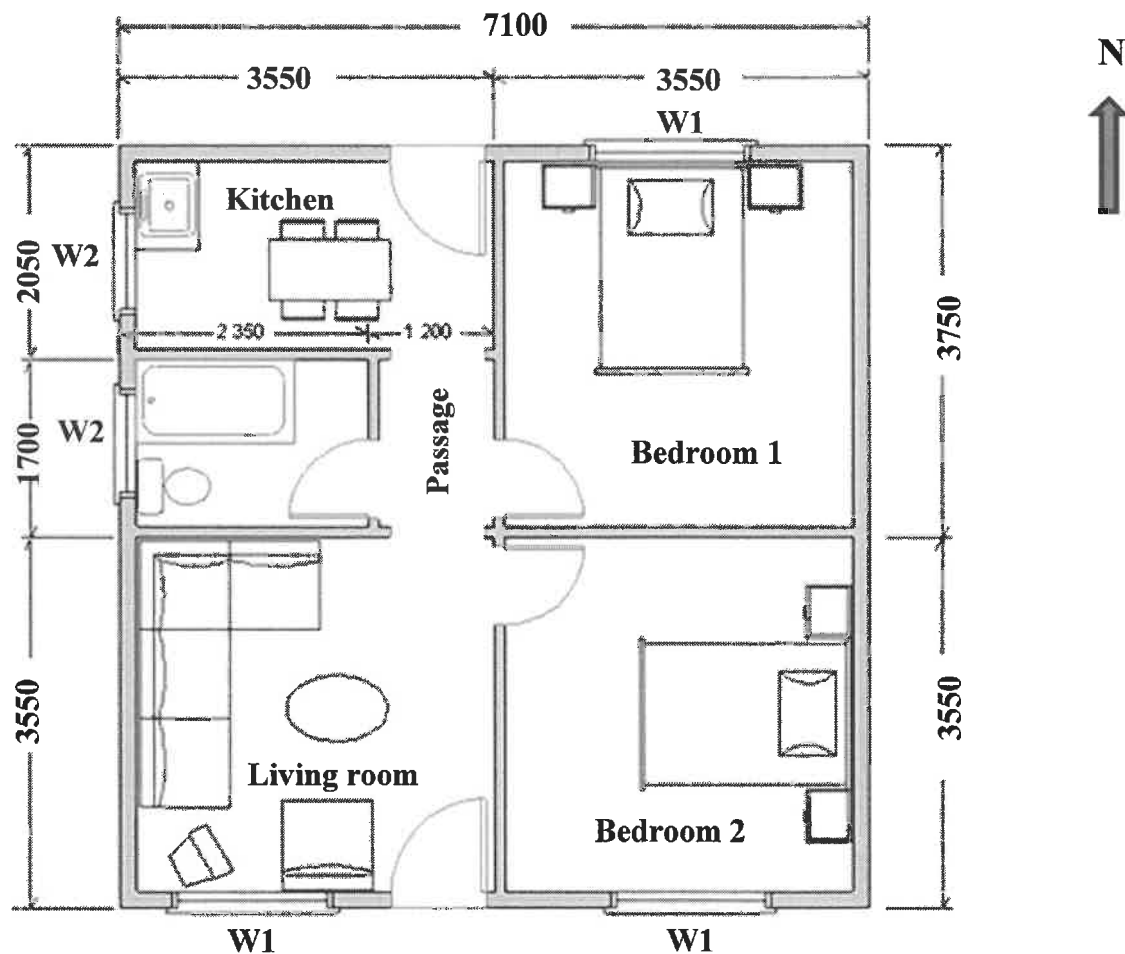
KEY

	National road		National Park
R75	Regional road		

ANNEXURE C


QUESTION 4.2

FLOOR PLAN OF A HOUSE IN PORT ELIZABETH



[Source: <http://www.saplans.co.zap1003>]

NOTE: All measurements are in **millimetres**.

KEY:	ITEMS	DESCRIPTION
	W1 =	Window opening
	W2 =	Window opening
		Opening requiring solid door