



basic education

Department:
Basic Education
REPUBLIC OF SOUTH AFRICA

NATIONAL SENIOR CERTIFICATE

IBANGA 12

ISIXHOSA ULWIMI LWASEKHAYA (HL)

IPHEPHA LOKUQALA (P1)

NOVEMBA 2011

AMANQAKU: 70

IXESHA: 2 iiyure

Olu viwo lunamaphepha ali-13.

IMIYALELO NENGCACISO

1. Eli phepha lemibuzo LINAMACANDELO AMATHATHU:

ICANDELO A:	Uvavanyo lokuqonda	(30)
ICANDELO B:	Isishwankathelo	(10)
ICANDELO C:	Ulwimi	(30)
2. Funda YONKE imiyalelo ngocoselelo.
3. Phendula YONKE imibuzo.
4. Qala icandelo NGALINYE kwiphepha ELITSHA.
5. Krwela umgca ekupheleni kwecandelo ngalinye.
6. Nombola impendulo nganye kanye ngokwendlela enonjolwe ngayo kwiphepha lemibuzo.
7. Shiya umgca emva kwempendulo nganye.
8. Bhala ngokucocekileyo nangokucacileyo.
9. Qwalasela ngokukodwa upelo nolwakhiwo lwezivakalisi.

ICANDELO A: UVAVANYO LOKUQONDA**UMBUZO 1****ISICATSHULWA A**

1.1 Funda esi sicutshulwa uze uphendule imibuzo elandelayo.

UKUTSHONA KWELANGA

- 1 Satsho isichotho kwanga kudala. Lasuka ilizwe lalulwandle nje ngamanzi. Kuyo yonke le nguqu kwakukho ntombazana ithile egama linguZoleka eyayingazange iyithathele ngqalelo yonke le nto. Yabethelwa luvalo kukutshawuza kwemibane nakukugqekreza kweendudumo. UZoleka wayengqengqe phezu komandlalo, engalele phofu. Ingqondo yale nzwakazi yayithatha ibeka. Wawungeva ngesingqala ukuba umvandedwa ngumonwabisi wayo. 'Mh-h-h! Nkosi yam! Azi esi simanga ndibotshelelwa ngaso ndiza kusithini na?'
- 2 Akukho mzi wawonwabe njengalo kaFunca kule lali yasePirie. UZoleka ongumafungwashe weli khaya, wayeza kutshata noZolile into kaXatasi kwelaseXesi. Loo mibane neendudumo zanga zisikelela itheko lamaNgwevu. Kwisidlo sangokuhlwa, amaNgwevu ayezele yimincili. IsiNgwevu nezalamane sasibuye sonke, sivela kwiimbombo zone zomhlaba. Kwaphithizela, abantu beyintlaninge benyakazela oku kweembovane. Kwisidlo sangokuhlwa, uZoleka akazange azive efuna nto ityiwayo. Wathi esatya njalo ngokucengwa ngumsakwabo, wee cafu-cafu nje wabuya wayeka, ekhala ngokungaziva mnandi. Akukho mntu wayeyifunde ivaliwe ngaphandle kukaThandeka. Waqonda mhlophe ukuba eyona nto idla umphefumlo womsakwabo inxulumene nokwenda oku kwakhe. Abazali bona ayikhange ibafikele le ngqondo, kubo ukugula kwentombi yabo kwakubangwa nje bubushushu bemini leyo phambi kweendudumo.
- 3 Kwalalwa ke isina njalo imvula, izulu selithe de, lindila nje kuphela. Umsakwabo uthe akugqiba ukuhlamba izitya nokuqoqosha emva kwesidlo, waya kulala gumbini linye noZoleka. Uthe akuba engene wee nqumama wajonga kumsakwabo. Into eyabangela ukuba amqwalasele sisibane esasithotywe sibane kwe luzizi. UThandeka wayefuna indlela angathi amenze umsakwabo azityande igila kuye. Wayengayazi eyona nto ikhathaze uZoleka apha ekwendeni kwakhe. UZoleka wayengumntu olikheswa, othuleyo nongafane athethe ngaphandle kokuba kuyimfuneko. Isisithethe kakade into yokuba nayiphi na intombi eyendayo ihlala ihlale ibe nomvandedwa. Wayesithi akucinga ngemihla yokwenda kwakhe yena Thandeka angazikhumbuli elila ngohlobo awayelila ngalo uZoleka, ngaphezu koko wenda eselula yena kunoZoleka.

- 4 Sacinywa isibane la manenekazi elele omabini. Ingxolo eyayivakala kweli gumbi yeyomntwana kaThandeka. Ethubeni, wema ngeenyawo uZoleka walumeka isibane, wathi rhuthu etyesini yakhe iphetshana elishicilelwe ngomatshini. Walivula walifunda ithuba elide ecinga ukuba nguyeyedwa ohleliyo. UThandeka owayengalalanga wafumana ithuba lokuba amqwalasele kakuhle umsakwabo. Wawungade ugqibe ukuba liphepha lemali emawaka-waka ngangendlela awayeliqwalasele ngayo, nexesha awalithathayo ukulisonga. Uthe engagqibanga ukulisonga zehla iinyembezi. Bathi obo buhle ngathi ngamanzi eendonga bajika banga ngamanzi esichotho. 'Ba – ba – bandijojisa ngenqatha, ndithi xa ndilithi hlasi, balixhuzule baligibisele enzonzobileni, apho ndinokuthi nokuba ndizama ukulithabatha, imizamo yam iwe phantsi. Ndichithe ixesha lam elingaka, kwale kunyaka wam wokugqibela, kuthiwe mandilahle yonke loo nto! Ngewayengandisanga esikolweni kwakanye.' 'Sh-!sh-! Zoleka uza kuvusa abantu.' Uvakele esitsho uThandeka ephakama esiya ngakuye. Uthe xa ephakathi esazulwini segumbi uThandeka, wadibana nelaa phepha ebelifunda uZoleka.
- 5 Walithabatha walifunda ithuba elide engavumi ukude aliqonde kakuhle kuba wayephele kwibanga lesihlanu engaliphumelelanga nalo. Uhle waqonda ukuba le yingxelo evela eNxukhwebe, phofu walikhumbula igama elithi 'Passed' ukuba linokuthetha ukuthi uliphumelele ibanga lesixhenxe. Weva ngoZoleka ethetha ebhekisa kuye 'My sister, khawundixelele: Buphi ubulumko? Iphi inyaniso? Ndichithe iminyaka engaka esinaleni, kwale sendiphumelele ibanga lesixhenxe ndinunuswe ngesoka, nasoka, isoka endingalaziyo elingazanga nam? Yintoni ebangele ukuba utata angandiyeki ndigqibe? Khawufan'ucinge! Umfo endingazange ndimbone nasemdudweni! O! Yehova! Nithi andiyikusuka ndiphambane?'
- 6 'Khumbula kaloku Tshangisa ukuba kutata akukho nto ingaphezu kwekhazi. Imfundo kuye yinto nje yokulibazisa ixesha okweli thuba ungekabonwa soka.'
Uthe engekagqibi uThandeka, wambombozela uZoleka, 'Oko kukuthi nam mandibuncame ubongikazi sebusezintupheni zezandla zam?' 'Kahle, Sikhomo, kaloku apha sihleli ikakhulu phakathi kwabantu abangathi bayazi bengazi. Isidanga abaxhentsa ngaso apha abantu sesokuba ayinamvuzo nangenelo into yokufundisa intombazana kuba ithi igqiba nje ibe sele isenda naloo mfundo yayo ingabasebenzelanga abazali bayo. Utata ke naye akamsulwa kweso senzo.'

[Sicatshulwe kwinoveli ethi, *UKUQHAWUKA KWEMBELEKO* ebhalwe nguWK, Tamsanqa amaphepha 5–10 saze sahlelwa]

Jonga kumhlathi 1

- 1.1.1 Chonga ibinzana elityhila ukuba uZoleka wayesoyika. (1)
- 1.1.2 Wayesenza ntoni uZoleka ngalo mzuzu kusina imvula, kutshawuza nemibane? (1)

1.1.3 Yintoni eyayingumonwabisi kaZoleka ngokwalo mhlathi? (1)

Jonga kumhlathi 2

1.1.4 Yintoni eyayibangela imincili kulo mzi kaFunca? (1)

1.1.5 Kwakutheni ukuze uZoleka athi cafu-cafu nje xa esitya? (1)

1.1.6 Caphula ibinzana eliphuhlisa ukuba mnye kuphela umntu owakhawuleza wayiqonda into yokungonwabi kukaZoleka. (1)

Jonga kumhlathi 3

1.1.7 Umntu olikheswa ngumntu:

A omde ngesithomo.

B othanda ukuzikhetha kwabanye.

C onomlomo omkhulu. (1)

1.1.8 Ingaba yinyani okanye bubuxoki?

Intombi eyendayo ihlala ihlale ibe nomvandedwa. (1)

Jonga kumhlathi 4

1.1.9 Ngubani owayesenza ingxolo kwigumbi ababelele kulo uThandeka noZoleka sele kucinywe nesibane. (1)

1.1.10 Sizathu sini esabangela ukuba uZoleka athathe ixesha elide ukufunda iphepha elalishicilelwe ngomatshini? (1)

1.1.11 Kuthetha ukuthini xa kusithiwa, UThandeka 'ngumsakwabo' Zoleka? (1)

1.1.12 Xa kusithiwa 'uZoleka wayemanz'andonga' kuthetha ukuba:

A wayembi kakhulu.

B wayethanda ukuhlamba ngamanzi eendonga.

C wayemhle kakhulu. (1)

1.1.13 Leliphi inqatha awayeza kuphulukana nalo uZoleka ngokwesicatshulwa? (1)

Jonga kumhlathi 5

1.1.14 Nika ubungqina ngokwesicatshulwa obubonisa ukuba uThandeka wayengafundanga kuyaphi. (1)

1.1.15 Ngqina okanye uphikise olu luvo lulandelayo ngokucaphula kwintetho kaZoleka:

'UZoleka wayeza kutshata nesoka lakhe alithandayo'. (2)

Jonga kumhlathi 6

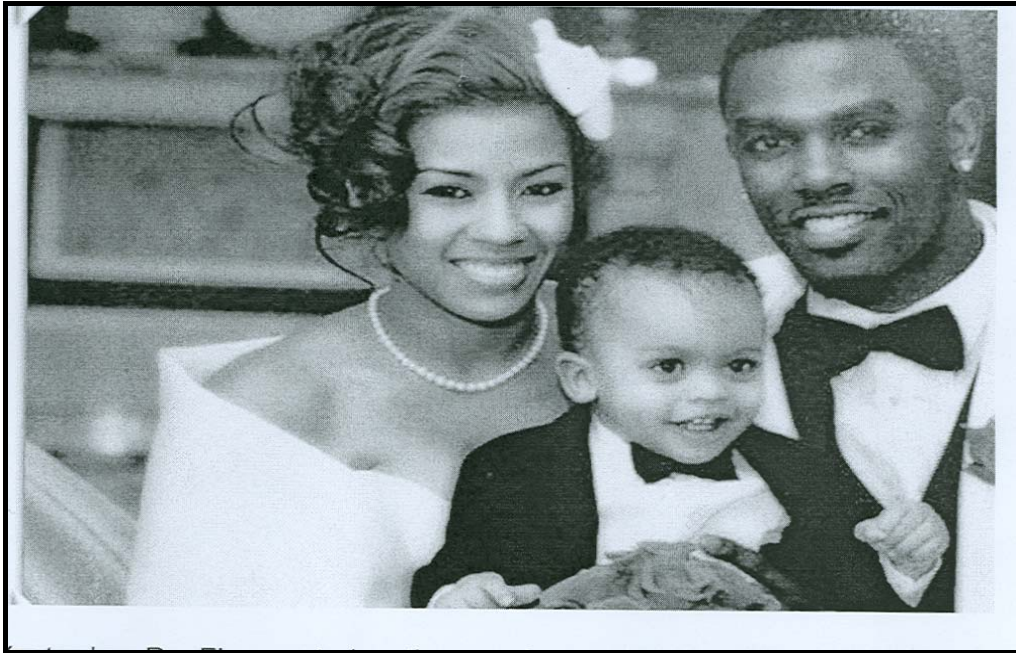
1.1.16 Wayenenjongo yokufundela ukuba yintoni uZoleka? (1)

1.1.17 Kutheni ibonwa iyinto engenamvuzo imfundo kweli khaya? (1)

1.1.18 Ungazikhupha njani wena kwingxaki awayekuyo uZoleka? (2)

1.2 ISICATSHULWA B: OKUBONWAYO

Qwalasela lo mfanekiso ungezantsi uze uphendule imibuzo elandelayo.



[Ucatshulwe kwintanethi <http://rapfix.mtv.com/2011/05/24/keyshia-cole-and-daniel-gibson-reveal-wedding-pic/> 26May-11 waze wahlelwa]

1.2.1 Abantu abakulo mfanekiso bangumqondiso wantoni ngokwasemtshatweni? (1)

1.2.2 Babonakala bephila ubomi obunjani? (1)

1.2.3 Xhasa impendulo yakho oyibhale kuMBUZO 1.2.2 ngezinto EZIMBINI oziphawuleyo. (2)

1.2.4 Ngokwalo mfanekiso ucinga ukuba kutheni ulusu lwalo mama lujongeka luluhle? (1)

1.2.5 Yintoni ebonakalisa ukuba aba bantu bathathu bonwabile ngokwenkangeleko? (1)

- 1.2.6 Ingaba yinyani okanye luluvo ukuba:
Abantu abakhulu abakulo mfanekiso batshatile. Zixhase. (2)
- 1.2.7 Imeko yenenekazi elikwiscatshulwa B nemeko kaZoleka okwiscatshulwa A zibonakala zahlukile. Cacisa indlela ezahluka ngayo. (2)

AMANQAKU ECANDELO A: 30

ICANDELO B: ISISHWANKATHELO**UMBUZO 2**

Funda esi sicutshulwa silandelayo, uze usishwankathele ngokweengongoma okanye ngokomhlathi. Landela le miyalelo xa ushwankathela:

- Chonga iingongoma eziphambili ezisi-7 uze uzicwangcise ngendlela ehambelanayo nethungelanayo. (7)
- Sebenzisa izivakalisi ezipheleleyo, ubhale ngawakho amazwi, ungawulahli umxholo.
- Qaphela indlela echanekileyo yokusetyenziswa kolwimi, iimpawu zobhalo nococeko. (3)
- Ubude bomthamo wesishwankathelo mabube ngamagama angama-70.
- Kunyanzelekile ukuba ulibhale ngokuchanekileyo inani lamagama owasebenzisileyo ngezantsi kwesishwankathelo.

ULUTSHA, IKAMVA LETHU

Le mbono yokuba ulutsha ziinkokheli, iingcaphephe neenjinieli zangomso ivakala iyinyaniso. Le nyaniso inokungqineka xa abantu abanamava ngobomi belondla ulutsha ngolwazi nezakhono. Yinyaniso ukuba umntu uvuna apho alime khona, ngoko ke eli themba sinalo ngolutsha luxhomekeke kubantu abadala nabanamava ukuba silubonise indlela eyiyo yokuphila. Ulutsha luyagxekwa ngendlela oluziphatha ngayo kuba lufunyanwa kwiindawo ezingalufanelanga njengoko lusakhulayo. Namhlanje lukwabizwa ngokuba lusingakulwana esidukileyo.

Xa sifuna ukuvelisa iinkokheli ezivunyiweyo maluxhotyiswe kangangoko ulutsha ngolwazi nezakhono ukuze lukwazi ukungena luphelele kumasebe ahlukileyo nakweminye imisebenzi ngokuzithemba. Imfundo sisiseko esiluhlalima sazo zonke izinto. Eso siseko kukwakha ikamva eliqaqambileyo nelingagungqiyo. Sakuba sikwenzile oko, singanalo ithemba lokuba siza kuyizuzisa impumelelo esiyinqwenelayo. Maluqeqeshwe ulutsha ekhaya, esikolweni nasekuhlaleni. Abantwana masingabafaki ezilingweni ngokumana sibathuma kwiindawo zeentselo nokuthenga iziyobisi kuba ngenye imini baya kufuna ukungcamla le nto bamana bethunywa yona.

Mabathabathe inxaxheba kwizinto zasekuhlaleni nakumaphulo apho badlala indima ephambili. Ekuhlaleni makuvulwe amabala okudlala, iindawo zokuqubha nezinye izinto ezinokuphuhlisa izakhono zabo. Ulutsha lufana nentlakohlaza apho kuhluma khona izinto ezintsha. Kukuwo loo mgangatho ekukhuleni apho kuntshula iinkokheli, izikhuthali, amakhalipha, abalawuli njalo-njalo. Lelo xesha kanye ekufuneka abadala beme bume bephuhlisa ezo talente zintle zifunwa sisizwe. Abantwana mabangcamle uthando bazive bexabisekile ukuze bakhule bezixabisa bekwazihlonela izinto ezintle ezibangqongileyo.

Mabathabathe umthwalo wezikhundla eziphezulu bengena ngokuzimisela kuzo ukuze sonwabele iimfundiso esithe sabaxhobisa ngazo ngenxa yomsebenzi omhle abawenzayo. Xa sithe sasilela ekuluxhobiseni ulutsha isizwe siya kutshabalala sibe sesingalawulekiyo. Luxanduva lwabadala ukukhulisa, ukuqeqesha nokukhokhela ulutsha ukuze luvelise ubutyebi obuya kondla ilizwe lethu liphela. Kogquba intlutha, liphele iphango, kuphalale ulwazi ukuze nenkqubela yelizwe ibe kwelona qondo liphezulu. Luyacetyiswa ulutsha ukuba lungathandabuzi ukuzityhuthulela kumava abantu abadala, bona bakha bayihamba le ndlela. Malukhethe amava aneempembelelo ezakhayo nezimsulwa. Ngokwenene ulutsha lulilo ikamva laso nasiphi na isizwe.

[Sicatshulwe kwimagazini *IBUTHO*, umqulu wesi-2 2010 kwiphepha le-16 saza sahlelwa]

AMANQAKU ECANDELO B: 10

ICANDELO C: ULWIMI**UMBUZO 3: ISIBHENGEZO-NTENGISO**

Funda esi sibhengezo-ntengiso singezantsi uze uphendule imibuzo elandelayo.

ISISULU!! ISISULU!! ISISULU!!!

Sihleli sodwa

limpahla nezihlangu ziyahlwa! Zixhamlele ezakho ngemalana encinci!

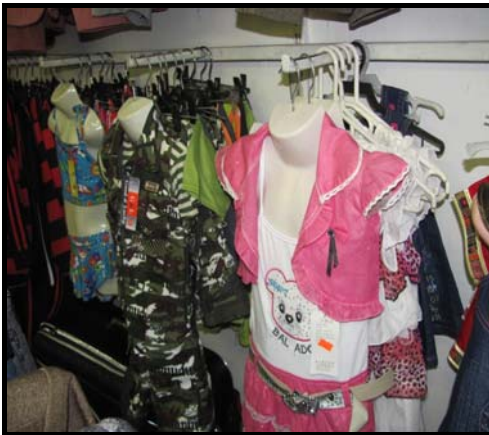
Nini?

NgoLwesihlanu we-19 ukuya kowama-26 kuNovemba 2011 xa zisekhona

Phi?

KwaZiyafikeleleka eMthatha

Amaxabiso athotywe ngama- 50%



Ezamakhwenkwe: Izihlangu

Ezamantombazana: lilokhwe, izikipa, iikawusi kunye nezihlangu

Kukho ibhaso lokuba xa umntu ethenge zambini kwinto nganye wofumana enye simahla.

[Nxibelelana nathi kwezi nombolo: 041-97700011/0715932728]

- 3.1 Kungani ukuba la magama okuqala kwesi sibhengezo-ntengiso abhalwe ngqindilili nangefonti enkulu? (1)
- 3.2 Esi sibhengezo-ntengiso sibhalelwe ukuloba abaphi abantu? (1)
- 3.3 Kutheni amagama ezamakhwenkwe no-ezamantombazana ebhalwe ngqindilili nje? (1)
- 3.4 Yinyani okanye luluvo ukuba xa uthenge zambini ufumana enye simahla? (1)

- 3.5 Ingaba inombolo 0715932728 yeyejelo lika:
 A Cell C
 B Vodacom
 C MTN (1)
- 3.6 Ukuba eli shishini ibilelakho ubunokuthengisa eziphi iindidi zezihlangu? Zixhase. (2)
- 3.7 Chonga into ibe nye enokuba sisisulu samakhwenkwe kuphela kwizinto ezidwelisiweyo. (1)
- 3.8 Kungani ukuba imigca emibini yokugqibela ibhalwe bukekela? (2)
[10]

UMBUZO 4: IKHATHUNI

[Icatshulwe kwi-intanethi www.cartoon.ca.za yaze yahlelwa]

- 4.1 Baphi aba bantu bakule khathuni xa ujongile? (1)
- 4.2 Nika into ibe NYE exhasa impendulo yakho eku-4.1 (1)
- 4.3 Ucinga ukuba nguwuphi omele utitshalakazi kwesi sibini sikwikhathuni? (1)
- 4.4 Igama, 'uxolo' liphuhlisa ntoni ngokwekhathuni? (1)
- 4.5 Nika isichasi segama 'uxolo'. (1)

- 4.6 Indlela utitshalakazi amjonge ngayo umfundi ibonisa ntoni? (1)
- 4.7 Sebenzisa igama 'umlomo' kwiqhalo. (1)
- 4.8 Cacisa ukuba utitshalakazi uyibonakalisa njani indlela avakalelwa ngayo ngokungenziwa komsebenzi. (1)
- 4.9 Xa isithethi sisithi, 'isingxobo sam seencwadi' sithetha:
- A into enemingxuma.
- B into eyenza ingxolo.
- C into yokuphatha iincwadi. (1)
- 4.10 Ukuba ibinguwe ongawenzanga umsebenzi katitshalakazi, ubuya kunika sizathu sini? (1)
- [10]

UMBUZO 5: ISICATSHULWA

Funda esi sicutshulwa, wandule ukuphendula imibuzo elandelayo.

- 1 Badla ngokutsho bathi uthando luyazizela xa usenza into oyithandayo. UZanele Mbokazi wayesenza kanye akuthandayo ukufika kwethuba lokudibana kwakhe noza kuba ngumyeni wakhe. Udibene noBhishophu Mpendulo Nkambule eSwazini enkonzweni apho uZanele wayeza kushumayela khona.
- 2 Babengazanga badibana ngaphambili kwaye uBhishophu wayengalazi eli nenekazi. Uyavuma ukuba akazange akhe acinge into engaphaya ngaye, kodwa iimvakalelo zakhe zaguquka, ngesiqophe, lwafik'uthando. 'Yho!' elo kukuphela kwegama akwazileyo ukulikhupha xa ebezoba indibano yabo yokuqala. 5
- 3 UZanele yena uthi, 'lithuba elalidaliwe' kodwa wayeziva ngathi ungumntwana kuba wazibona sele ekwimeko ebecinga ukuba ikho kwiTV kuphela – ukuthandana niqala ukubonana. 'Kwakungaqhelekanga ukuziva ngoluya hlobo, ndandiziva ngathi ndisisidenge xa ndiziva ngoluya hlobo ngomntu endidibene naye imizuzwana. Kwakungathi wonke umntu uyandibona,' utsho. 10
- 4 Baqala ngoku ukuthandana emva kokudibana kwabo okokuqala, okwalandelwa yiminxeba neencoko zasebusuku. Babehlala kumazwe ahlukeneyo, uZanele eThornwood, eMarianhill, eThekwini uBhishophu eSwazini eMbabane. Balugcina uthando lwabo olusele luza kugqiba unyaka ngokuhambelana rhoqo nokufowunelana. 15

- 5.1 Ukusetyenziswa kwebinzana, 'ukufika kwethuba' kwisivakalisi esingezantsi kubonisa:

- A Ixesha.
- B Isikhankanyi.
- C Isenzeko.

UZanele wayesenza kanye akuthandayo ukufika kwethuba lokudibana kwabo. (1)

- 5.2 Sinika ntsingiselo ni isakhi esikrwelelweyo esingu-zi- kwisenzi esikuso kwesi sivakalisi silandelayo?
Bathi uthando luyazizela xa usenza into oyithandayo. (1)
- 5.3 Senze msebenzi mni isimelabizo esikrwelelwe umgca ngaphantsi kwisivakalisi esingezantsi?
UBhishophu wayengalazi eli nenekazi. (1)
- 5.4 Bhala ngokupheleleyo igama lesiXhosa elibolekwe kolunye ulwimi eliphuhlisa eli likrwelelwe umgca ngaphantsi kwisivakalisi esingezantsi.
Wazibona sele ekwimeko ebecinga ukuba ikho kwiTV kuphela. (1)
- 5.5 Isimamva u-ana esikrwelelwe umgca ngaphantsi kumagama akwisivakalisi esingezantsi siphuhlisa ntoni?
Ukuthandana niqala ukubonana kuyamangalisa. (1)
- 5.6 Nika igama elithetha into enye neli likrwelelweyo kweli binzana lingezantsi.
... ngesiquphe lwafik'uthando ... (1)
- 5.7 Dibanisa ezi zivakalisi zibini zigatya-nye zingezantsi ngesihlanganisi osinikiweyo kwizibiyeli zibe sisivakalisi esinye.
UBhishophu akazange acinge nto engenye ngoZanele. (ukuba) UBhishophu uyavuma. (1)
- 5.8 Bhala le ntetho ilandelayo ibe kwingxelo-ntetho.
UZanele yena uthi, 'Ndandiziva ngathi ndisisidenge.'
Qala ngolu hlobo: UZanele uthe ... (1)
- 5.9 Lungisa isiphene esikwesi sivakalisi silandelayo:
Esi sibini sasidibana ngemingxeba kwiincoko zasebusuku. (1)
- 5.10 Bhala kwakhona esi sivakalisi silandelayo sibe nolandelelwaniso-magama oluchanekileyo. Qala ngegama elikrwelelweyo.
ngokufowunelana babelugcina nokuhambelana qho Uthando lwabo (1)
[10]

AMANQAKU ECANDELO C: 30
AMANQAKU EWONKE: 70