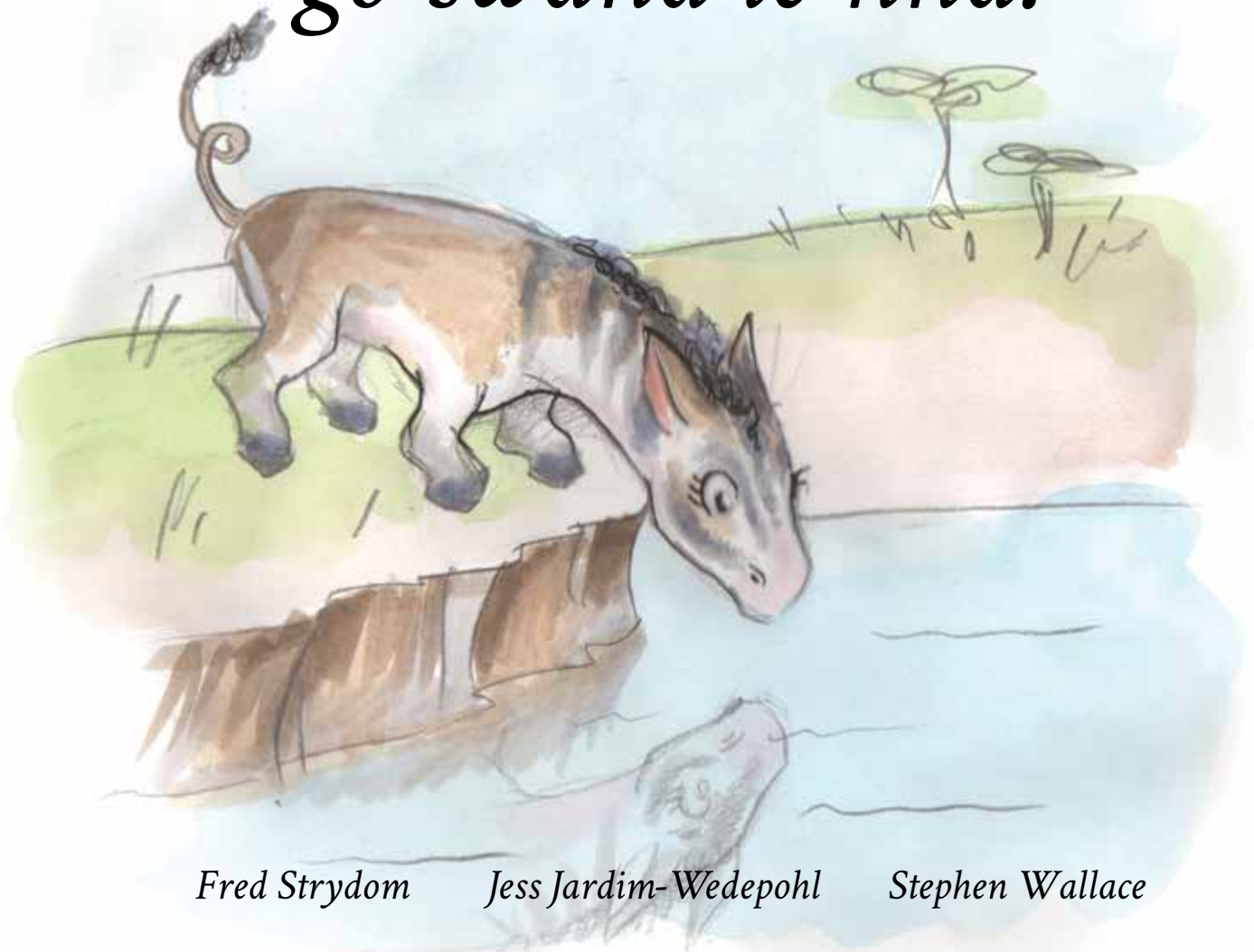


Naa go na le motho wa go swana le nna?



Fred Strydom

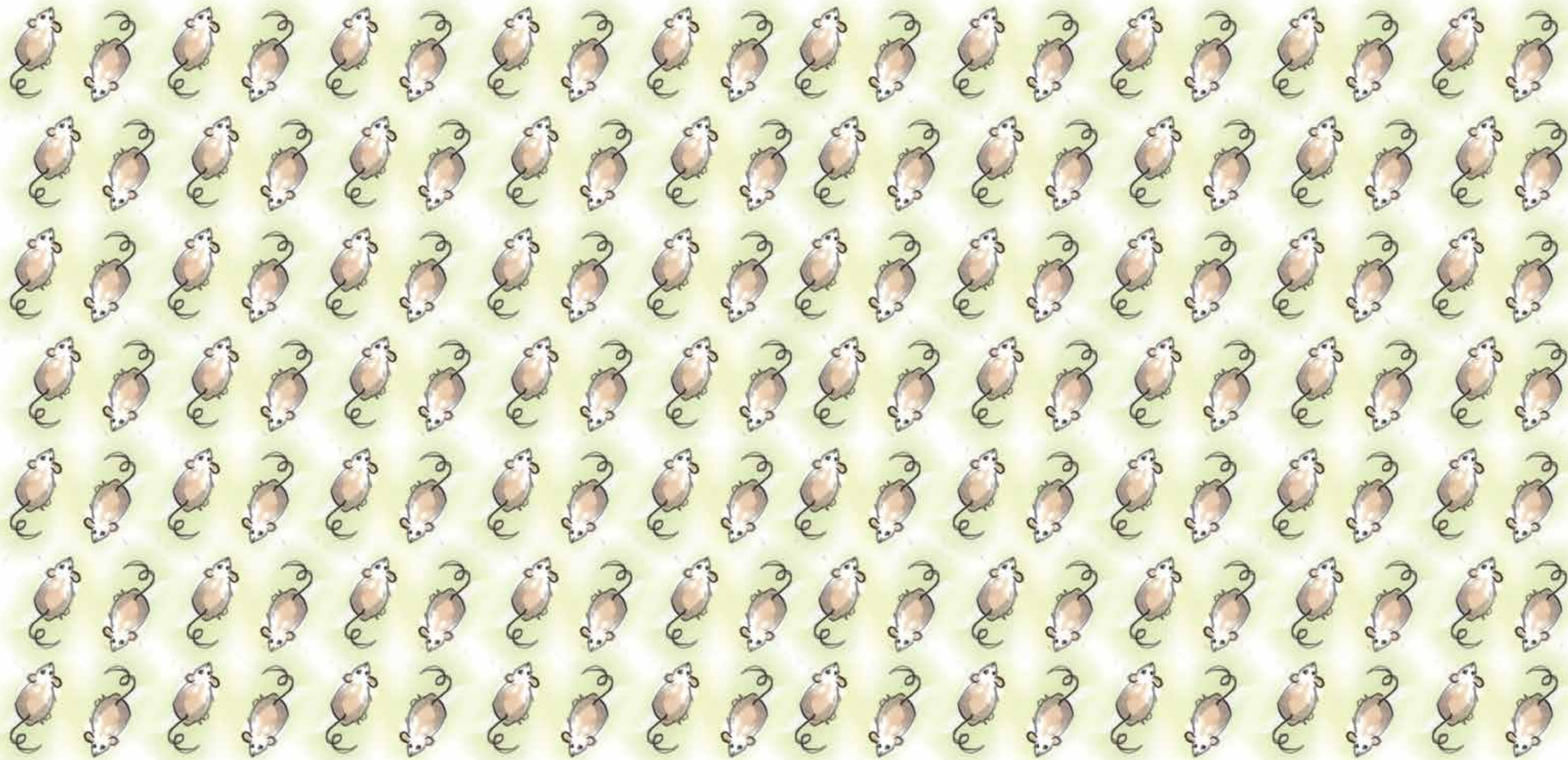
Jess Jardim-Wedepohl

Stephen Wallace

Naa go na le motho wa go swana le nna?

Puku ye ke ya







Every child should own a hundred books by the age of five. To that end, Book Dash gathers creative professionals who volunteer to create new, African storybooks that anyone can freely translate and distribute. To find out more, and to download beautiful, print-ready books, visit bookdash.org.

Naa go na le motho wa go swana le nna?

Illustrated by Jess Jardim-Wedepohl

Written by Fred Strydom

Designed by Stephen Wallace

Translated by Nal'ibali

with the help of the Book Dash participants in Johannesburg on 27 June 2015.

ISBN: 978-1-928377-57-3

This work is licensed under a Creative Commons Attribution 4.0 Licence (<http://creativecommons.org/licenses/by/4.0/>). You are free to share (copy and redistribute the material in any medium or format) and adapt (remix, transform, and build upon the material) this work for any purpose, even commercially. The licensor cannot revoke these freedoms as long as you follow the following license terms:

Attribution: You must give appropriate credit, provide a link to the license, and indicate if changes were made. You may do so in any reasonable manner, but not in any way that suggests the licensor endorses you or your use.

No additional restrictions: You may not apply legal terms or technological measures that legally restrict others from doing anything the license permits.

Notices: You do not have to comply with the license for elements of the material in the public domain or where your use is permitted by an applicable exception or limitation.

No warranties are given. The license may not give you all of the permissions necessary for your intended use. For example, other rights such as publicity, privacy, or moral rights may limit how you use the material.

Naa go na le motho wa go swana le nna?

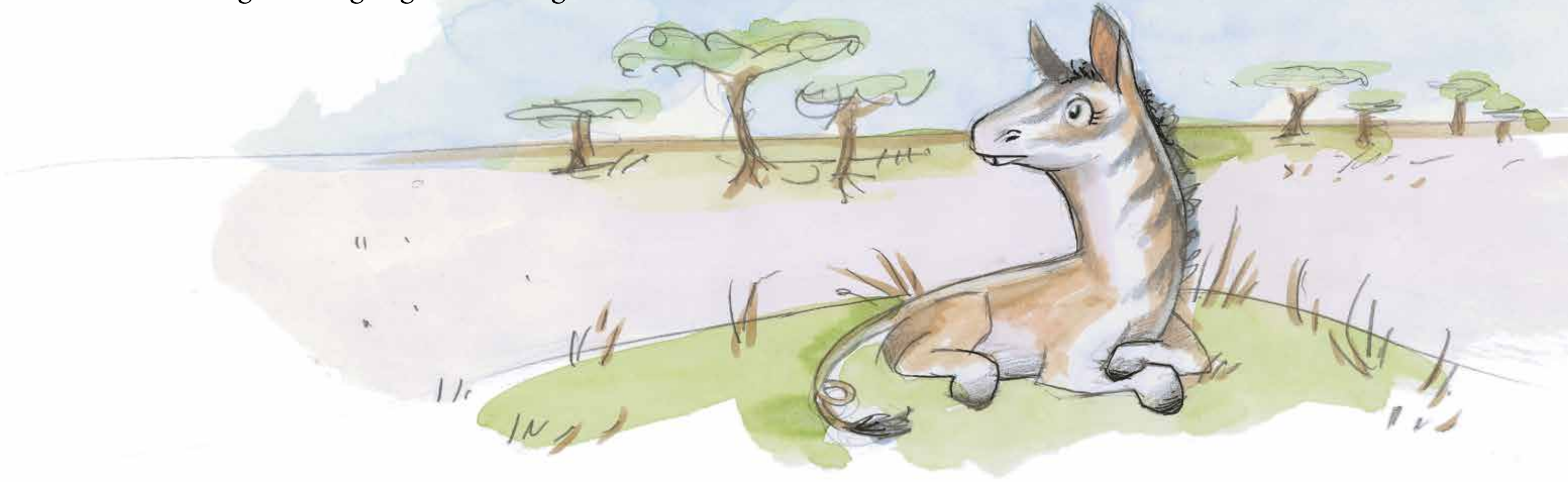


Fred Strydom

Jess Jardim-Wedepohl

Stephen Wallace

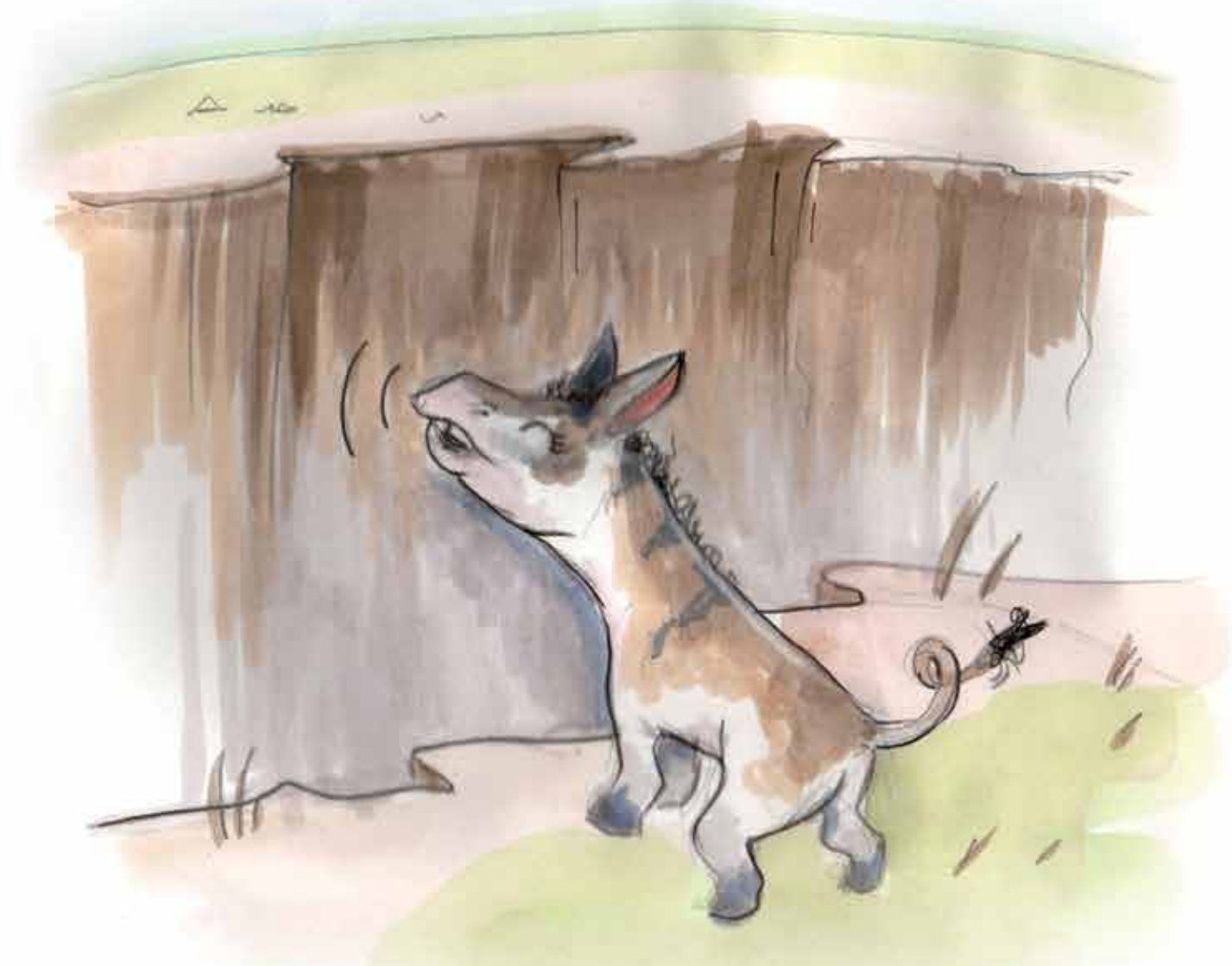
Ke ipotšiša gore e kaba go na le nna yo
mongwe mo gongwe lefaseng.



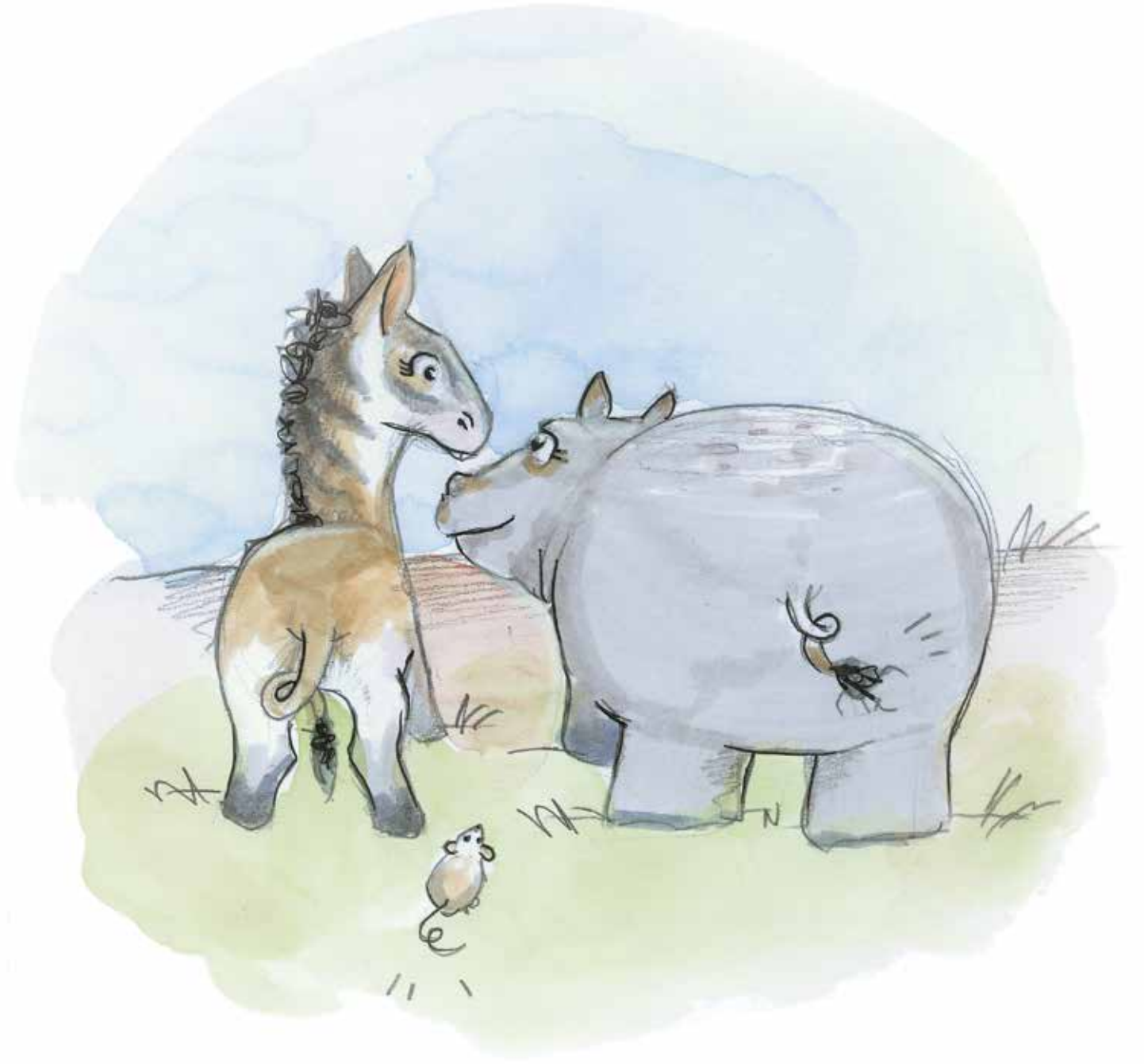
Wa go swana ...



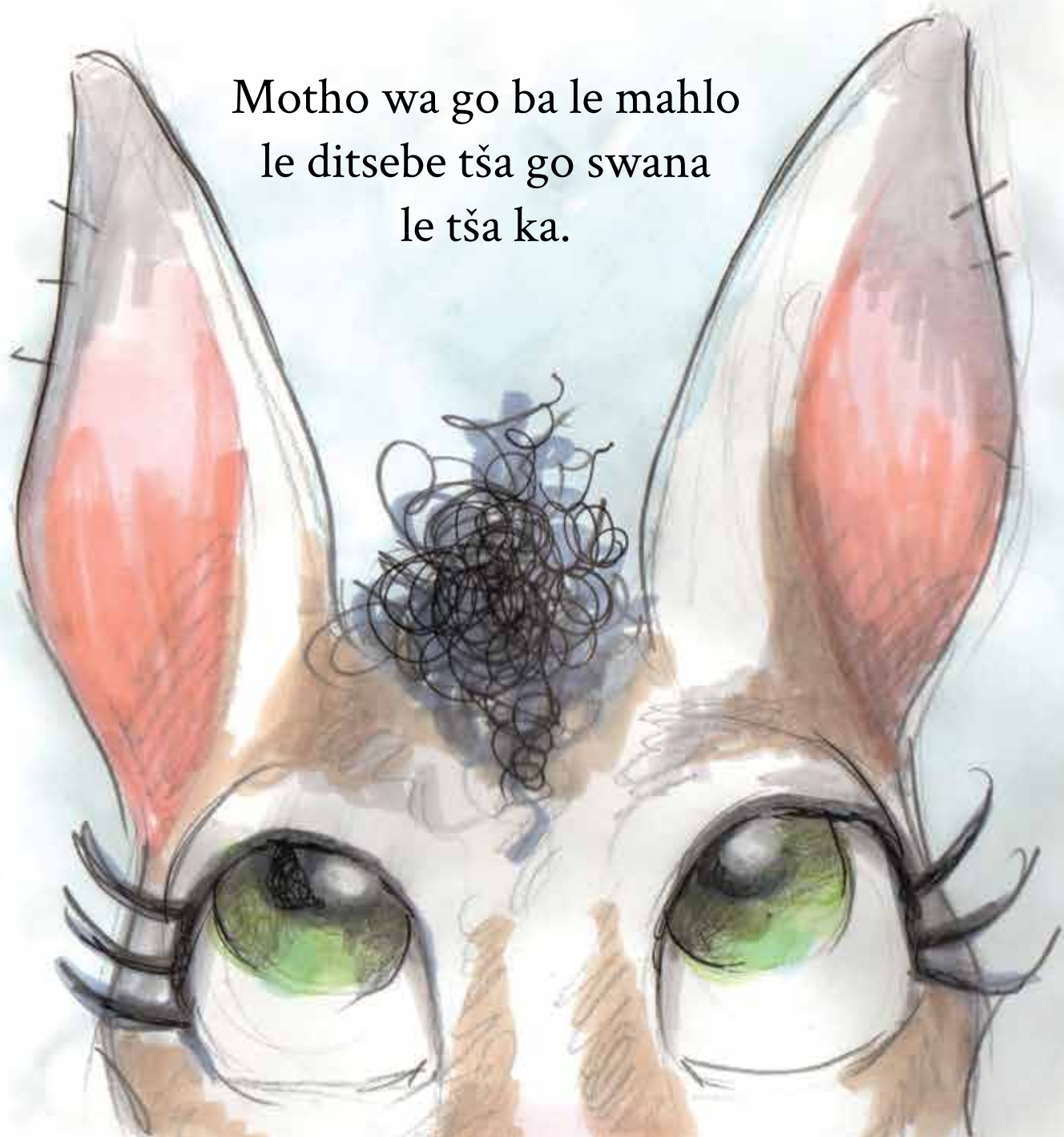
... ebile a bolela go swana le nna.



Gape a na le dikhele tša go
swana le tša ka.



Motho wa go ba le mahlo
le ditsebe tša go swana
le tša ka.



Wa go sega go swana le nna.



Yo a ka dirago dilo tše ke di dirago ...



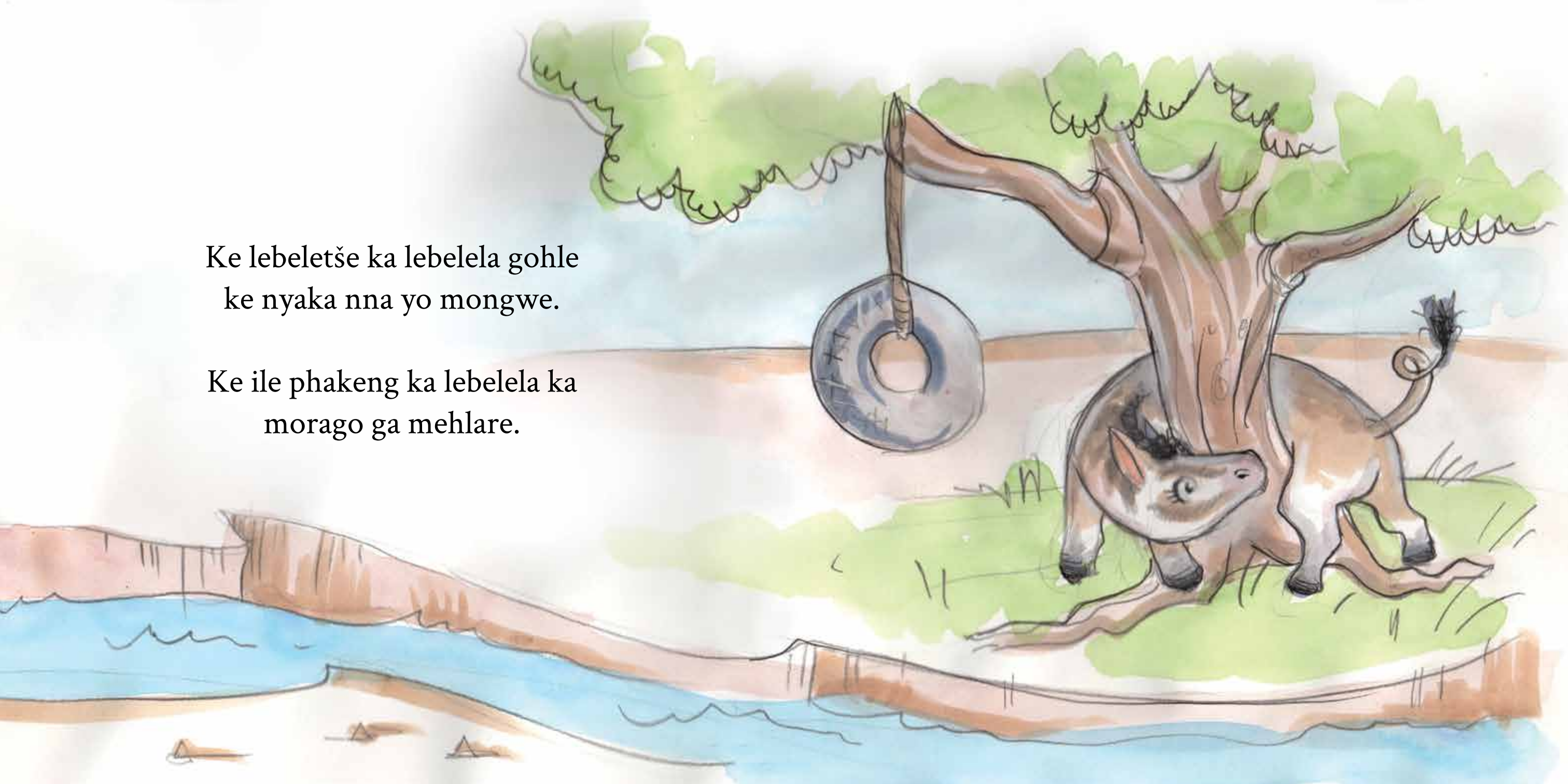


... gomme a sa dire tše ke sa di dirego.



Ke lebeletše ka lebelela gohle
ke nyaka nna yo mongwe.

Ke ile phakeng ka lebelela ka
morago ga mehlare.



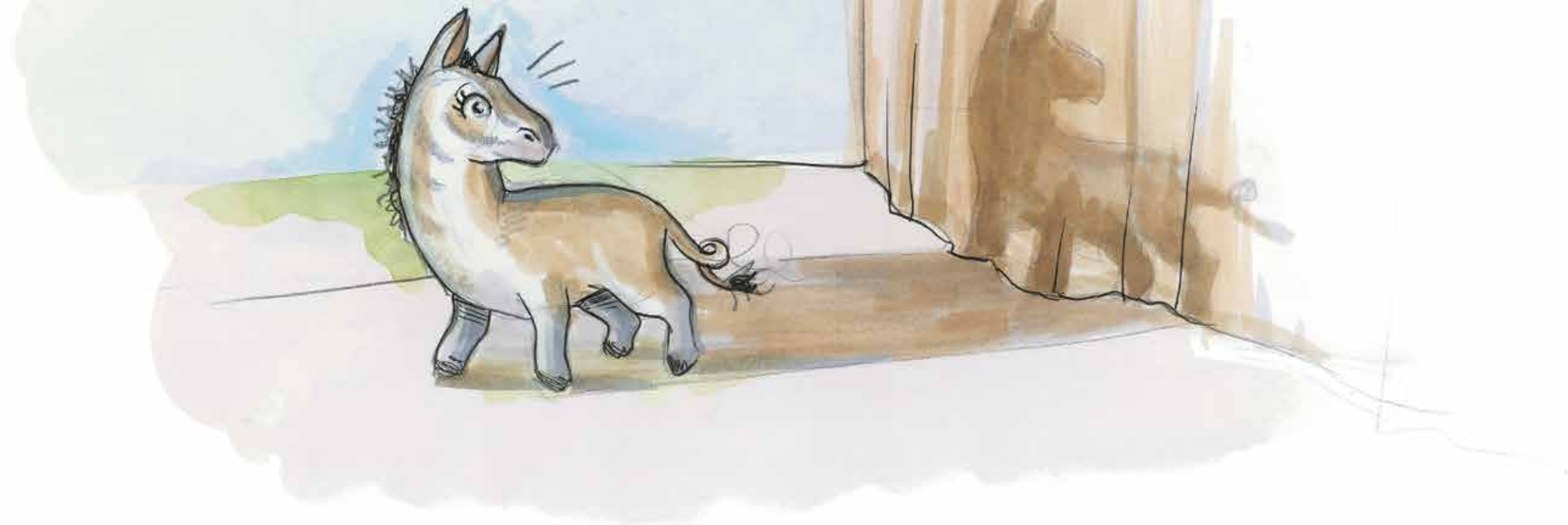


Ke lebeletše gohle, godimo le tlase ...

... go sefahlego se sengwe le se sengwe.



Ga se ka hwetša nna yo mongwe
lefelong lefe goba lefe.



Go na le nna o tee mo lefaseng!
Ke kgethegile, ee, ke nnete!



Efela ga se nna fela, o a bona?
Gape go na le wena o tee!



