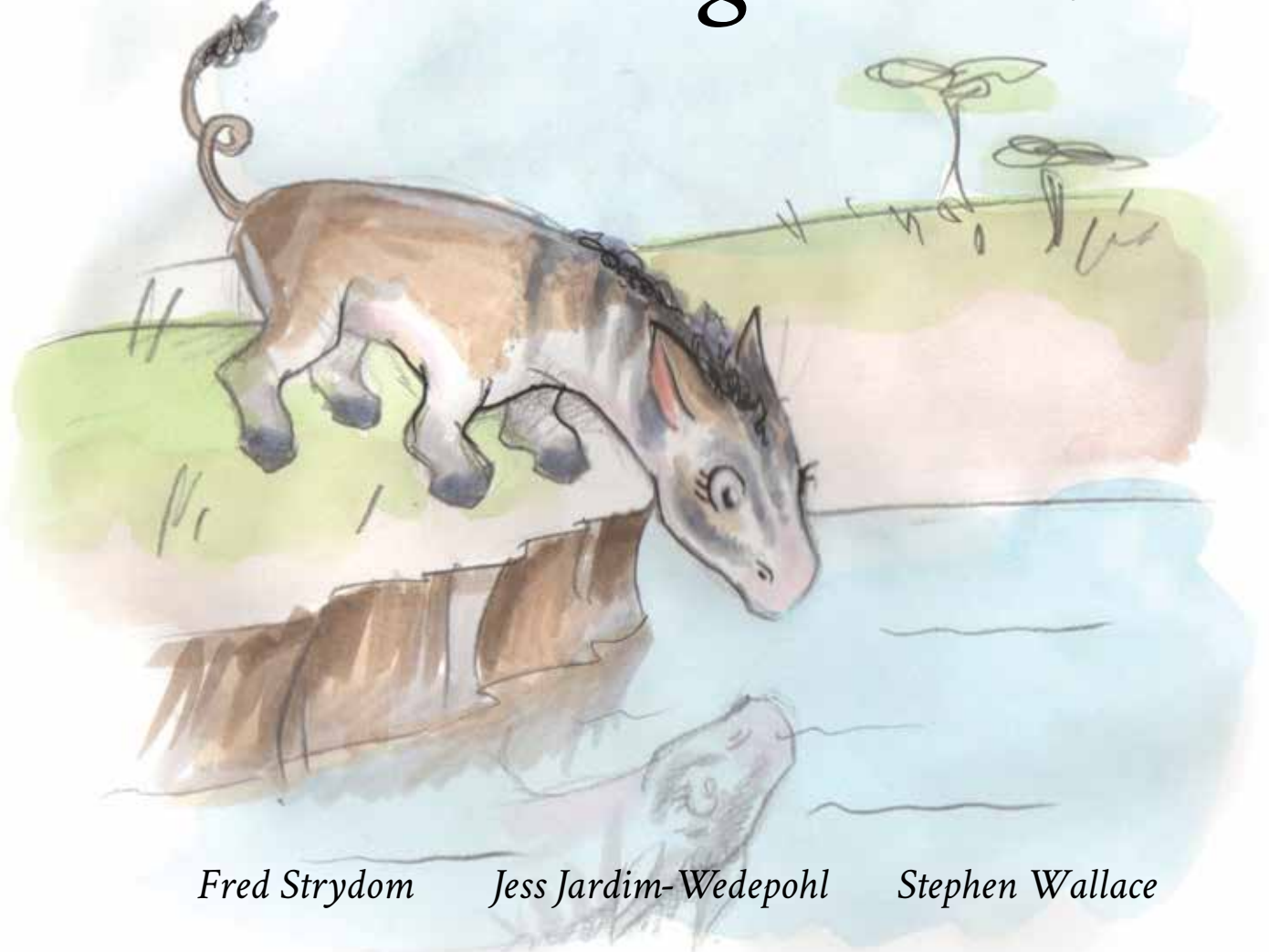


Na ho na le motho ya tshwanang le nna?



Fred Strydom

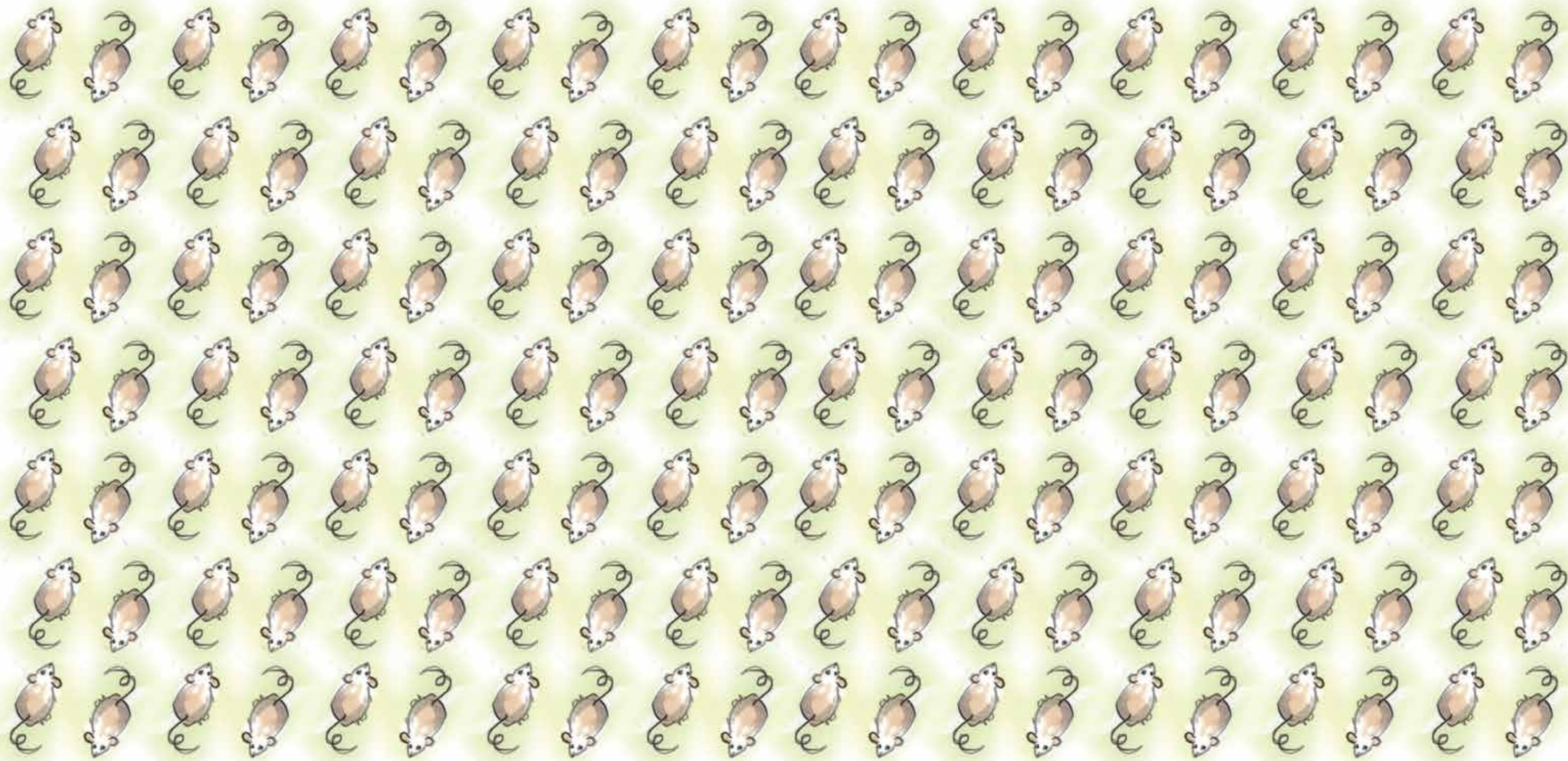
Jess Jardim-Wedepohl

Stephen Wallace

Na ho na le motho ya tshwanang le nna?

Buka ena ke ya







Every child should own a hundred books by the age of five. To that end, Book Dash gathers creative professionals who volunteer to create new, African storybooks that anyone can freely translate and distribute. To find out more, and to download beautiful, print-ready books, visit bookdash.org.

Na ho na le motho ya tshwanang le nna?

Illustrated by Jess Jardim-Wedepohl

Written by Fred Strydom

Designed by Stephen Wallace

Translated by Nal'ibali

with the help of the Book Dash participants in Johannesburg on 27 June 2015.

ISBN: 978-1-928377-56-6

This work is licensed under a Creative Commons Attribution 4.0 Licence (<http://creativecommons.org/licenses/by/4.0/>). You are free to share (copy and redistribute the material in any medium or format) and adapt (remix, transform, and build upon the material) this work for any purpose, even commercially. The licensor cannot revoke these freedoms as long as you follow the following license terms:

Attribution: You must give appropriate credit, provide a link to the license, and indicate if changes were made. You may do so in any reasonable manner, but not in any way that suggests the licensor endorses you or your use.

No additional restrictions: You may not apply legal terms or technological measures that legally restrict others from doing anything the license permits.

Notices: You do not have to comply with the license for elements of the material in the public domain or where your use is permitted by an applicable exception or limitation.

No warranties are given. The license may not give you all of the permissions necessary for your intended use. For example, other rights such as publicity, privacy, or moral rights may limit how you use the material.

Na ho na le motho ya tshwanang le nna?

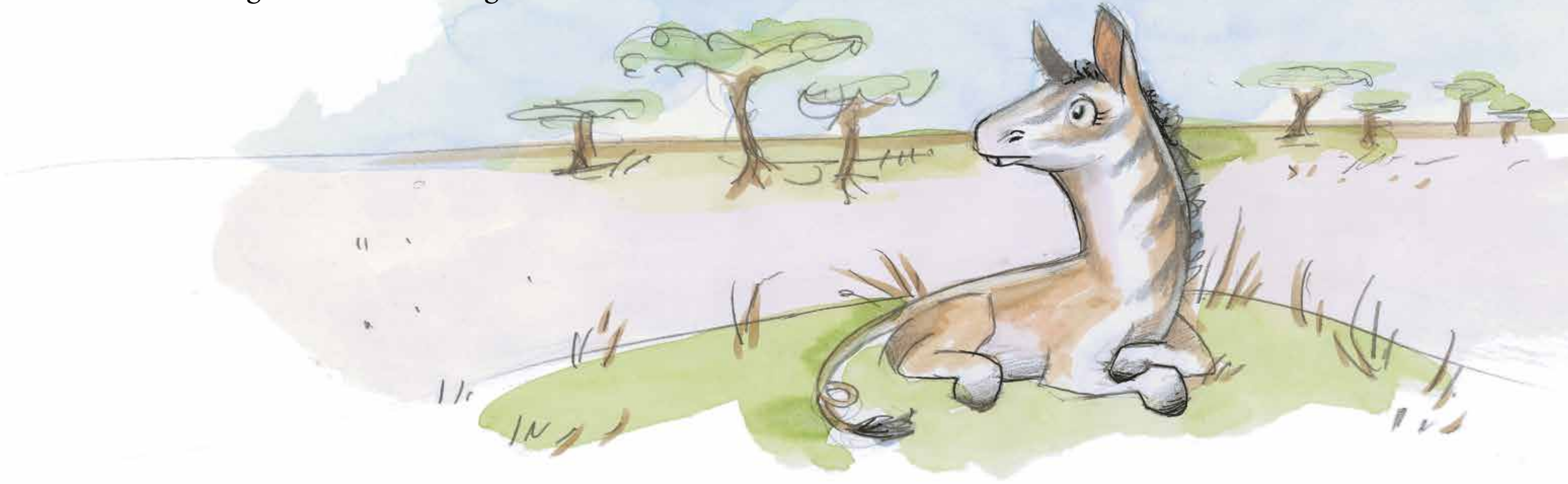


Fred Strydom

Jess Jardim-Wedepohl

Stephen Wallace

Ke a ipotsa hore ebe ho na le nna
e mong kaekae lefatsheng mona.



Ya tshwanang le nna hantle ...



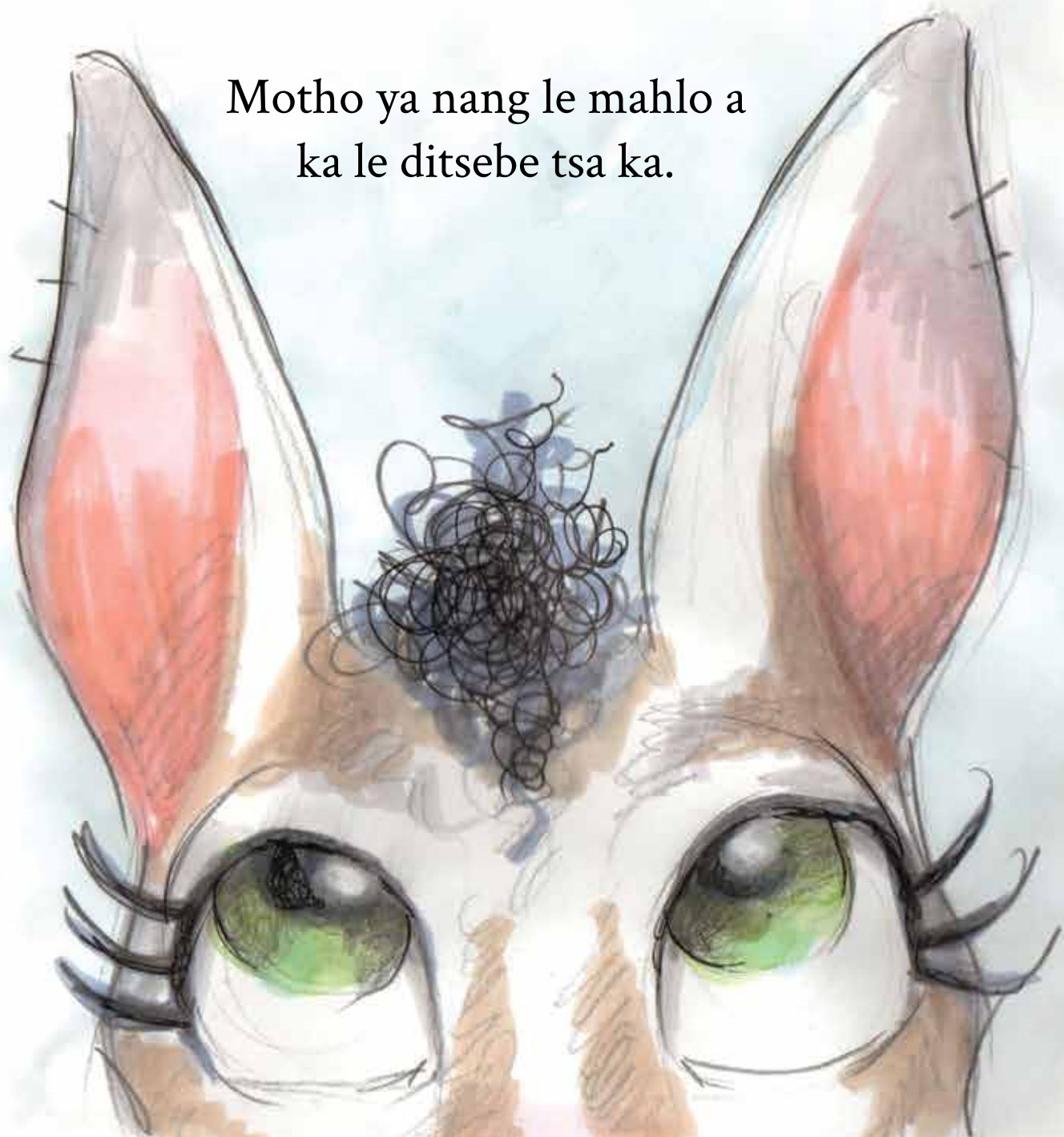
... le ya buang jwaloka nna.



Ya bileng a ena le moriri o harelaneng
jwalo ka wa ka.



Motho ya nang le mahlo a
ka le ditsebe tsa ka.



Ya bileng a tsheha jwaloka nna.



Ya ka etsang seo ke se etsang ...



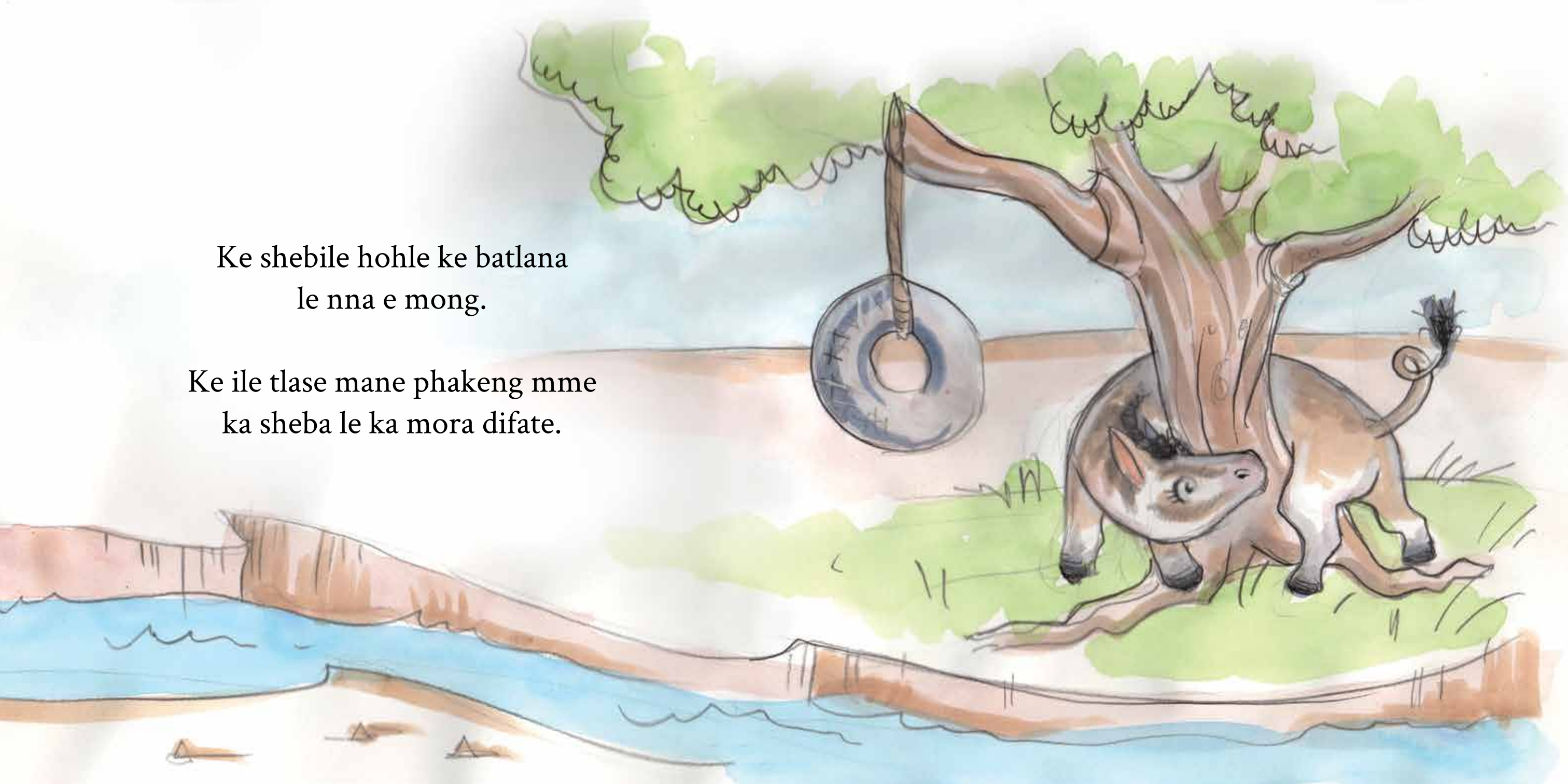


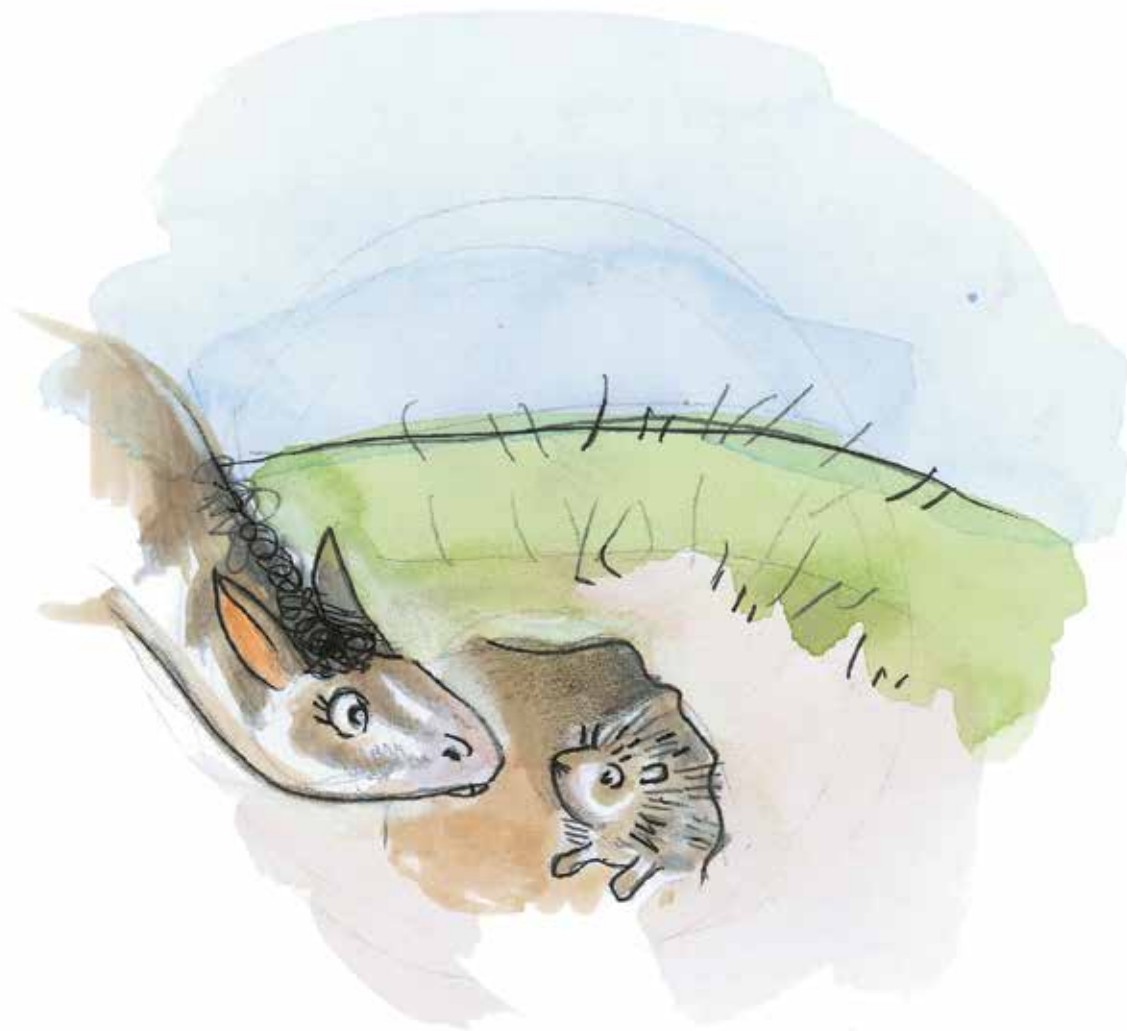
... mme a sa kgone seo ke sa se kgoneng.



Ke shebile hohle ke batlana
le nna e mong.

Ke ile tlase mane phakeng mme
ka sheba le ka mora difate.





Ka sheba hohle, hodimo le tlase ...

... sefahlehong se seng le se seng.



Ha ke a ka ka fumana nna e
mong kae kapa kae.



Ho na le nna ya le mong lefatsheng!
Ke kgethehile, ehlile ke nnete!



Empa e seng nna feela, ha o bone?
Ho na le wena a le mong feela!



