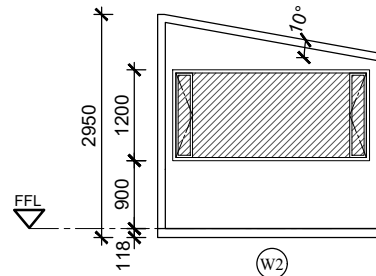
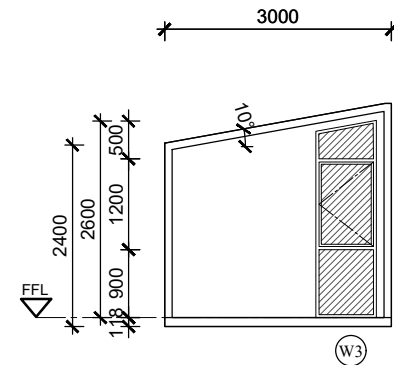


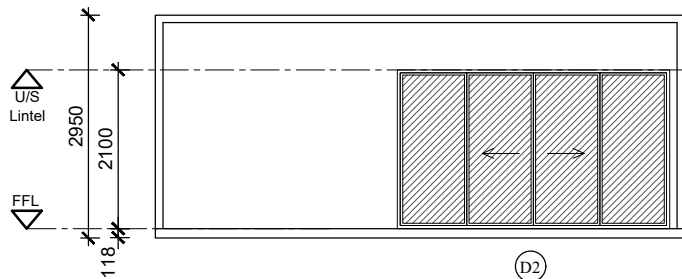
PLAN



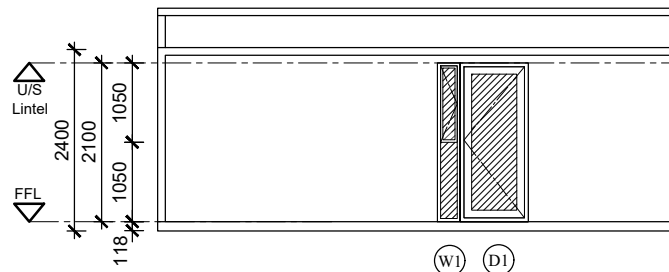
RIGHT ELEVATION



LEFT ELEVATION



FRONT ELEVATION



BACK ELEVATION

**NOTES:**

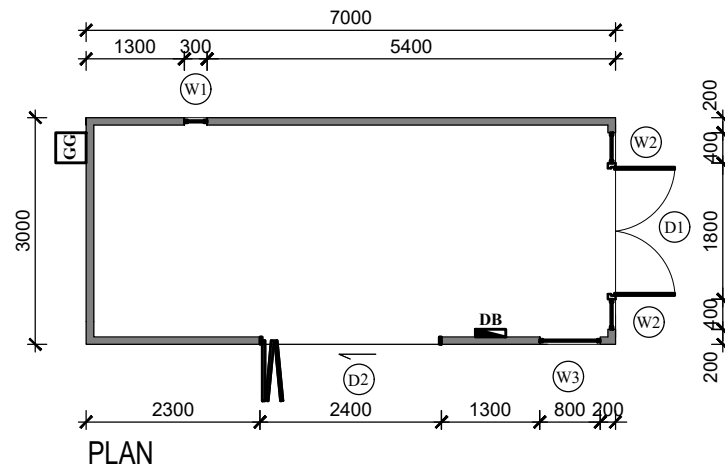
Drawings are not to be scaled.  
 Dimensions to be checked on site.  
 All workmanship to be in accordance, with the National Building Regulations, local By-Laws and Standards and Codes of Practice.  
 All material to comply with SABS.  
 All foundations (concrete and timber posts) to be specified and approved by Engineer.

**WINDOWS & DOORS:**

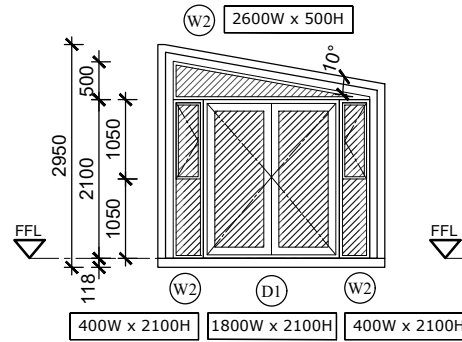
- Aluminium frame powder coated - colour to match external cladding,
- Superior / Palace casement sections to be used,
- All glass to be laminated reflective coated safety glass with SHGC >0.31 & U-value >5.8,
- Master key & lock for doors per unit,
- Window & Door openings to be measure by supplier before manufacturing,
- Shop drawings to be sent for approval,
- SANS 613 compliant,

**MONO PITCH - UNIT 6**

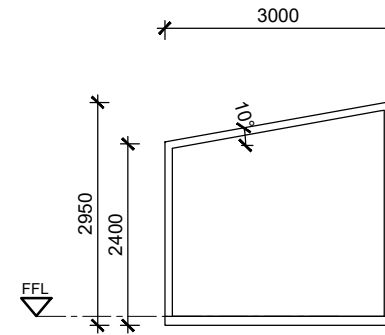
SCALE 1:100 @ A4



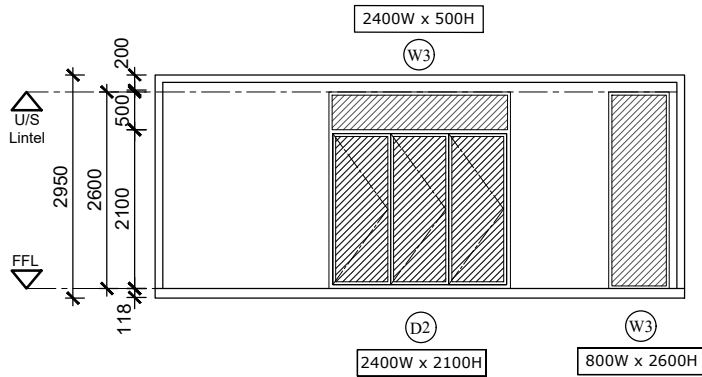
PLAN



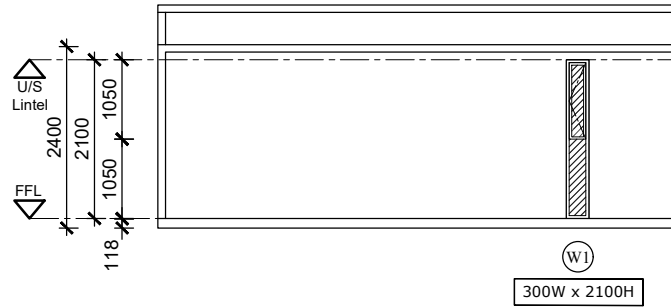
RIGHT ELEVATION



LEFT ELEVATION



FRONT ELEVATION



BACK ELEVATION

**NOTES:**

Drawings are not to be scaled.  
 Dimensions to be checked on site.  
 All workmanship to be in accordance, with the National Building Regulations, local By-Laws and Standards and Codes of Practice.  
 All material to comply with SABS.  
 All foundations (concrete and timber posts) to be specified and approved by Engineer.

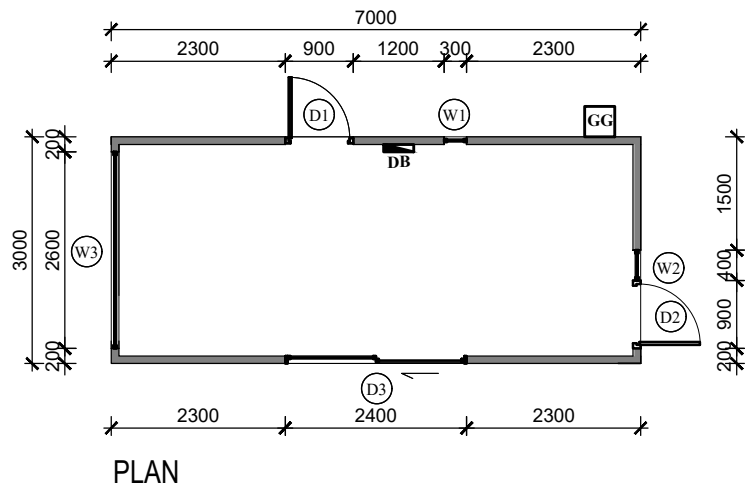
**WINDOWS & DOORS:**

- Aluminium frame powder coated - colour to match external cladding,
- Superior / Palace casement sections to be used,
- All glass to be laminated reflective coated safety glass with SHGC >0.31 & U-value >5.8,
- Master key & lock for doors per unit,
- Window & Door openings to be measure by supplier before manufacturing,
- Shop drawings to be sent for approval,
- SANS 613 compliant,

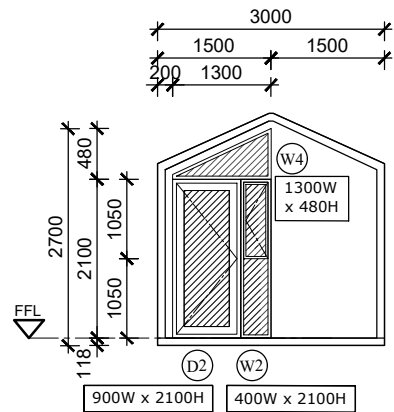
**MONO PITCH - UNIT 4**

SCALE 1:100 @ A4

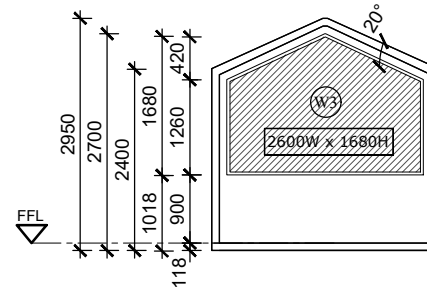




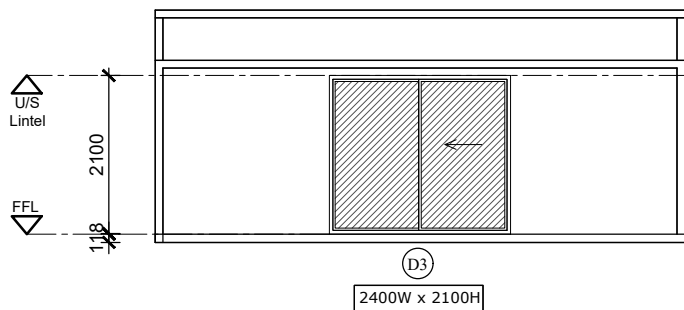
PLAN



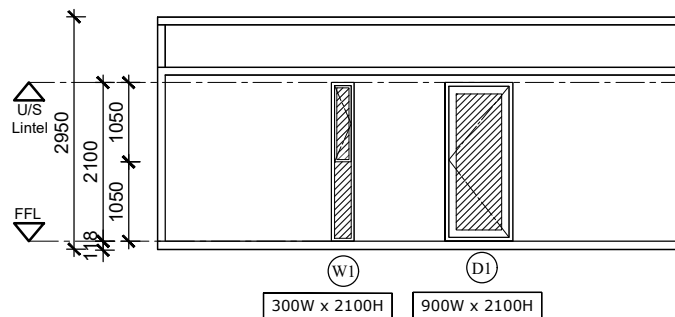
RIGHT ELEVATION



LEFT ELEVATION



FRONT ELEVATION



BACK ELEVATION

**NOTES:**

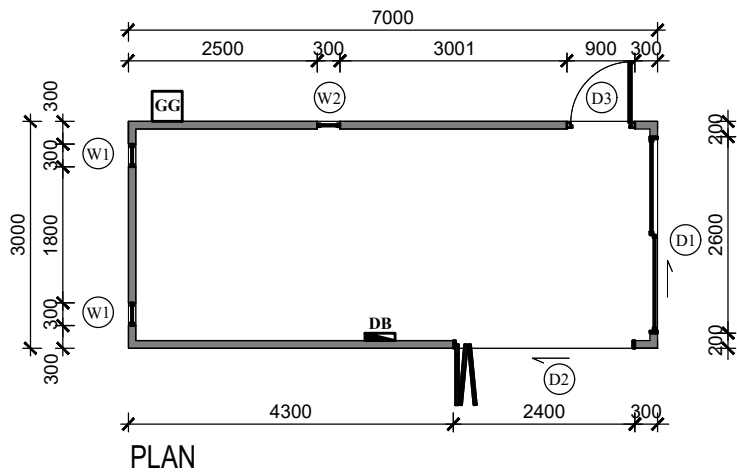
Drawings are not to be scaled.  
 Dimensions to be checked on site.  
 All workmanship to be in accordance, with the National Building Regulations, local By-Laws and Standards and Codes of Practice.  
 All material to comply with SABS.  
 All foundations (concrete and timber posts) to be specified and approved by Engineer.

**WINDOWS & DOORS:**

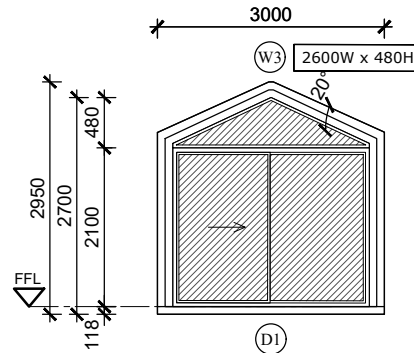
- Aluminium frame powder coated - colour to match external cladding,
- Superior / Palace casement sections to be used,
- All glass to be laminated reflective coated safety glass with SHGC >0.31 & U-value >5.8,
- Master key & lock for doors per unit,
- Window & Door openings to be measure by supplier before manufacturing,
- Shop drawings to be sent for approval,
- SANS 613 compliant,

**GABLE ROOF - UNIT 1**

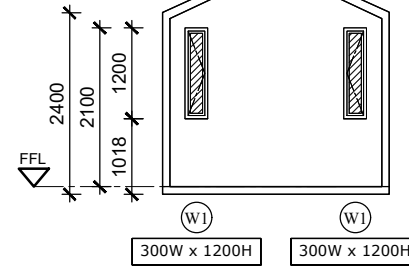
SCALE 1:100 @ A4



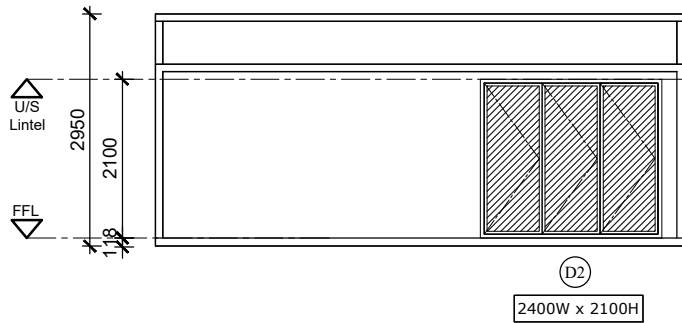
PLAN



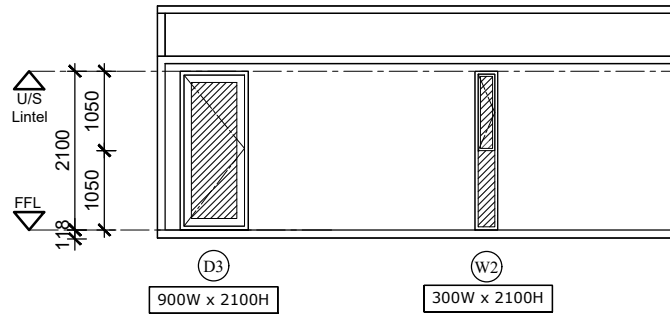
RIGHT ELEVATION



LEFT ELEVATION



FRONT ELEVATION



BACK ELEVATION

**NOTES:**

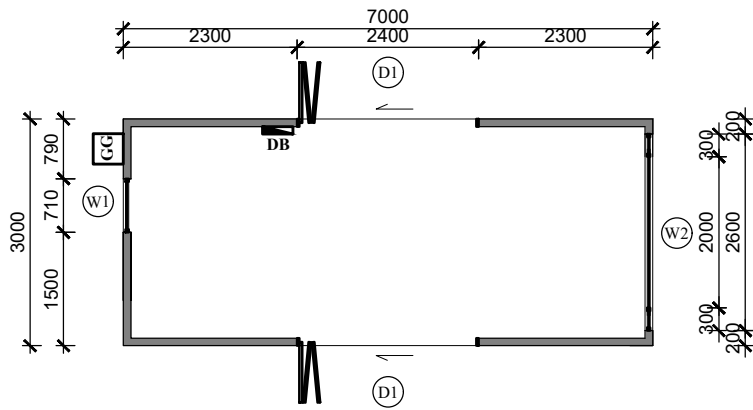
Drawings are not to be scaled.  
 Dimensions to be checked on site.  
 All workmanship to be in accordance, with the National Building Regulations, local By-Laws and Standards and Codes of Practice.  
 All material to comply with SABS.  
 All foundations (concrete and timber posts) to be specified and approved by Engineer.

**WINDOWS & DOORS:**

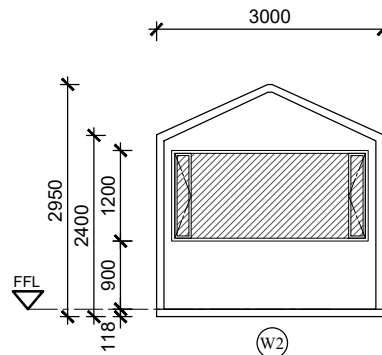
- Aluminium frame powder coated - colour to match external cladding,
- Superior / Palace casement sections to be used,
- All glass to be laminated reflective coated safety glass with SHGC >0.31 & U-value >5.8,
- Master key & lock for doors per unit,
- Window & Door openings to be measure by supplier before manufacturing,
- Shop drawings to be sent for approval,
- SANS 613 compliant,

**GABLE ROOF - UNIT 2**

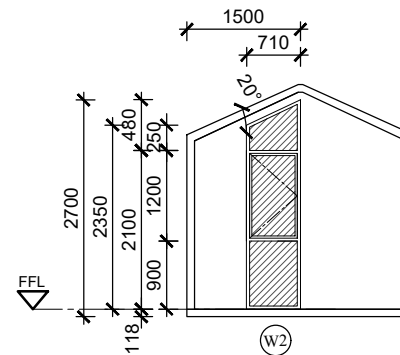
SCALE 1:100 @ A4



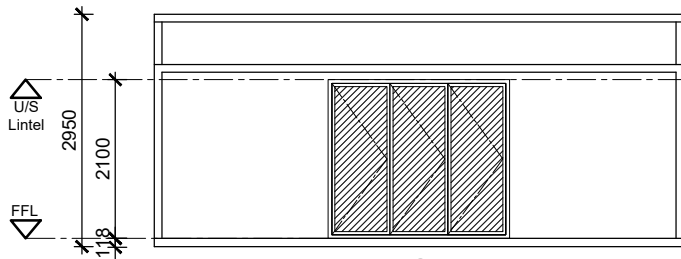
PLAN



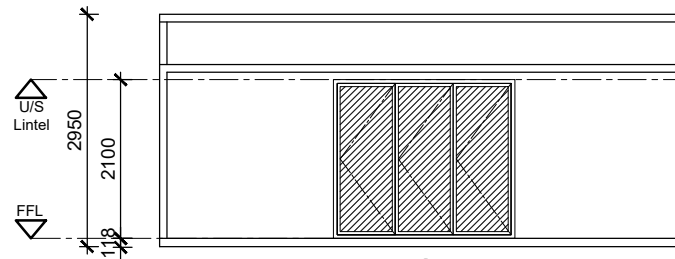
RIGHT ELEVATION



LEFT ELEVATION



FRONT ELEVATION



BACK ELEVATION

**NOTES:**

Drawings are not to be scaled.  
 Dimensions to be checked on site.  
 All workmanship to be in accordance, with the National Building Regulations, local By-Laws and Standards and Codes of Practice.  
 All material to comply with SABS.  
 All foundations (concrete and timber posts) to be specified and approved by Engineer.

**WINDOWS & DOORS:**

- Aluminium frame powder coated - colour to match external cladding,
- Superior / Palace casement sections to be used,
- All glass to be laminated reflective coated safety glass with SHGC >0.31 & U-value >5.8,
- Master key & lock for doors per unit,
- Window & Door openings to be measure by supplier before manufacturing,
- Shop drawings to be sent for approval,
- SANS 613 compliant,

**GABLE ROOF - UNIT 3**

SCALE 1:100 @ A4

